

Pavilion V,
by Vincent Van Duysen

kettal

Description

Pavilion V

Designer
Vincent Van Duysen

Collection
Pavilion V

The V Pavilion prides itself on its extensive selection of lighting options, meticulously curated to enhance both the outer facade and inner sanctum. Along the periphery, discreet wall-mounted lights cast a gentle glow, accentuating the architectural lines and creating a welcoming aura. Delving deeper into its interior realms reveals a plethora of illuminative possibilities awaiting exploration.

Within, an eclectic mix of lighting fixtures stands ready to fulfill any lighting need. Versatile ceiling spotlights offer the freedom to focus beams precisely, whether for highlighting art pieces or illuminating workspaces. Adding a touch of sophistication are the suspended pendant lights, gracefully dangling to infuse spaces with a refined ambiance. Complementing these are the overhead luminaires, ensuring uniform brightness throughout the area.

	Height	Width	Length
6x4	270 / 106,3"	400 / 157,5"	600 / 236,2"
6x6	270 / 106,3"	600 / 236,2"	600 / 236,2"
6x8	270 / 106,3"	800 / 315"	600 / 236,2"



Standard sizes

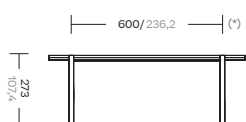
Pavilion V

Designer
Vincent Van Duysen

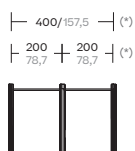
Collection
Pavilion V

6x4 Pavilion

Column width: 18,1/7,12



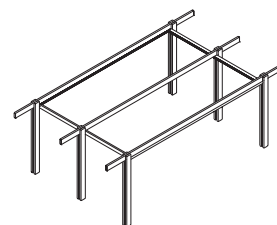
Front



Side

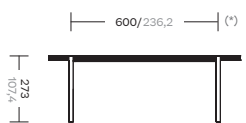


Top

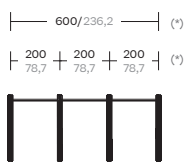


6x6 Pavilion

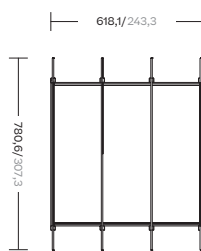
Column width: 18,1/7,12



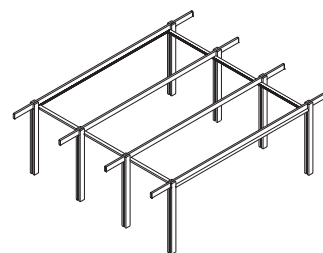
Front



Side

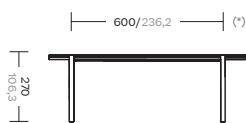


Top

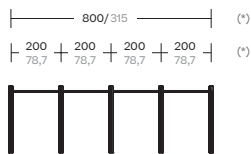


6x8 Pavilion

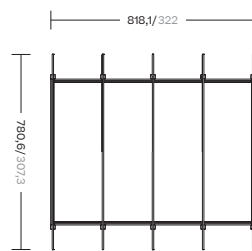
Column width: 18,1/7,12



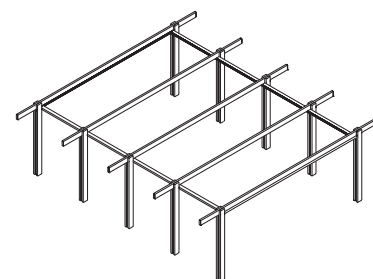
Front



Side



Top



(*) These dimensions are measured from the centers of the columns.

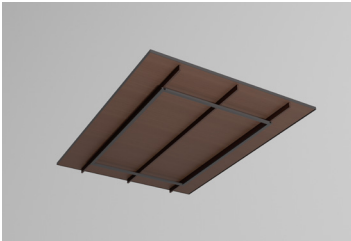
Ceiling sizes

Pavilion V

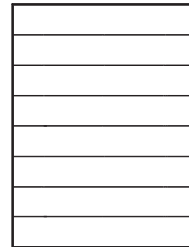
Designer
Vincent Van Duysen

Collection
Pavilion V

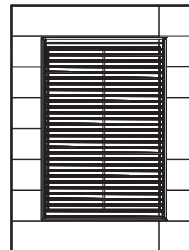
6x4 Ceiling



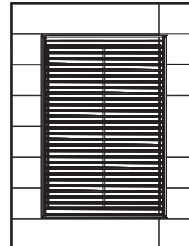
Aluminium Ceiling + Canopy



Bioclimatic Ceiling + Aluminium Canopy



Bioclimatic Ceiling w/LED + Aluminium Canopy



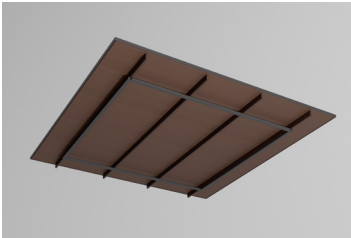
Ceiling sizes

Pavilion V

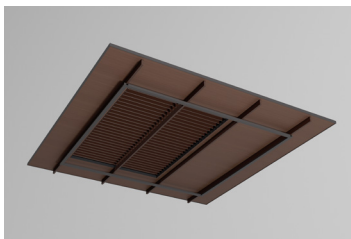
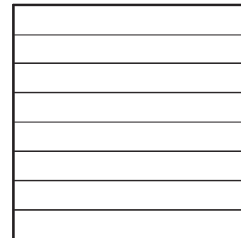
Designer
Vincent Van Duysen

Collection
Pavilion V

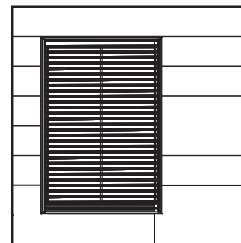
6x6 Ceiling



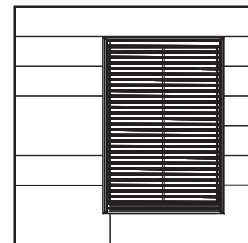
Aluminium Ceiling + Canopy



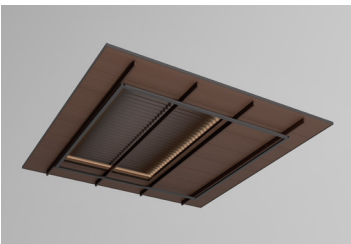
Bioclimatic Ceiling + Aluminium Canopy



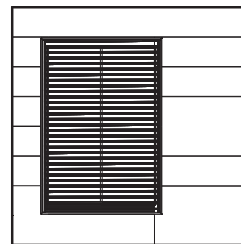
Left



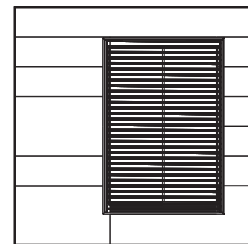
Right



Bioclimatic Ceiling w/LED +
Aluminium Canopy



Left



Right

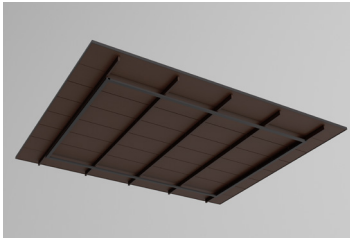
Ceiling sizes

Pavilion V

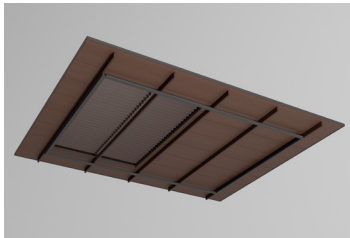
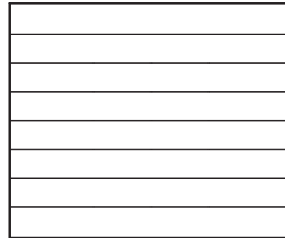
Designer
Vincent Van Duysen

Collection
Pavilion V

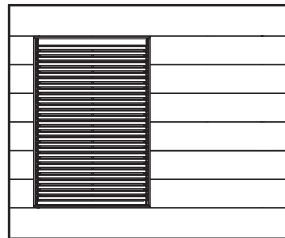
6x8 Ceiling



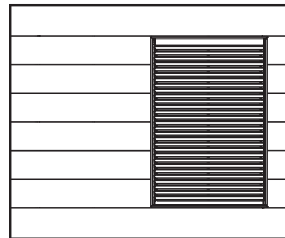
Aluminium Ceiling + Canopy



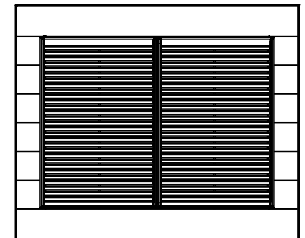
Bioclimatic Ceiling + Aluminium Canopy



Left



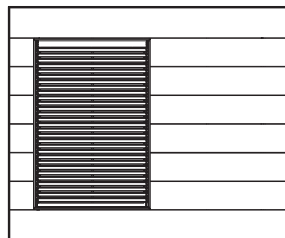
Right



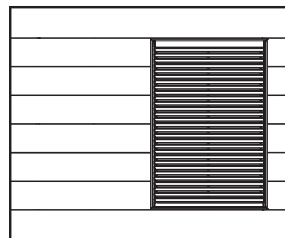
Double



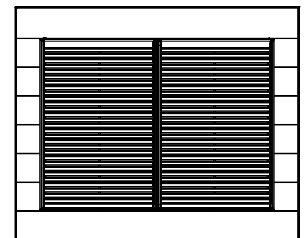
Bioclimatic Ceiling w/LED +
Aluminium Canopy



Left



Right



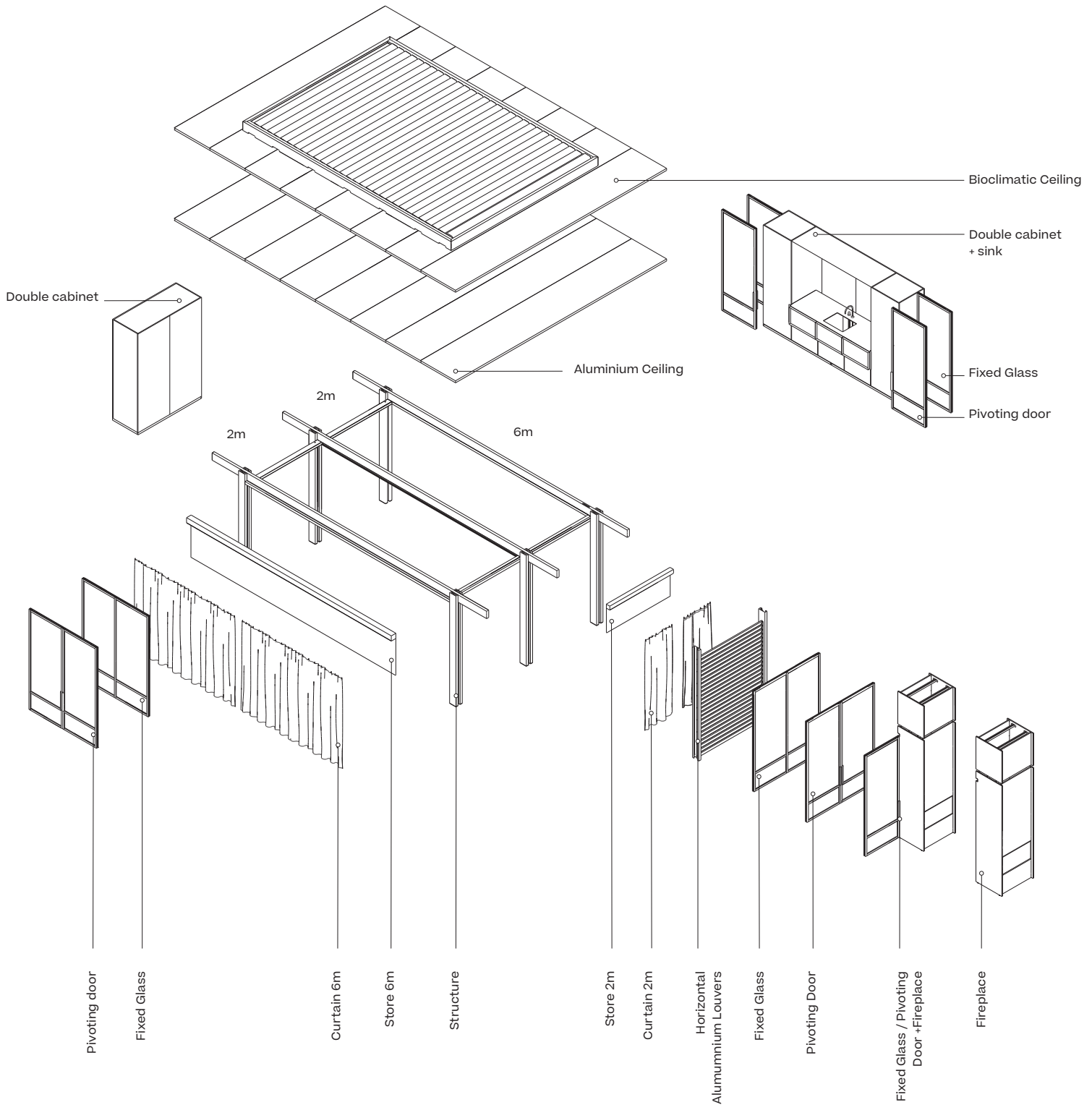
Double

Isometric view

Pavilion V

Designer
Vincent Van Duysen

Collection
Pavilion V

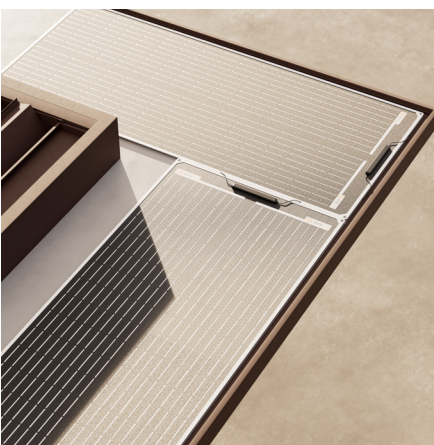




Switch



Plug



Solar panels & Battery

The Pavilion V, by Vincent Van Duysen, offers an unprecedented level of control through its innovative interface options.

Users can effortlessly manage the pavilion's features using conventional switches conveniently located throughout the structure. Alternatively, the cutting-edge Kode app, developed by Kettal, revolutionizes the user experience. Available for both iOS and Android devices, Kode empowers users to govern the pavilion's lighting independently and adjust the bioclimatic ceiling—all with a simple tap on their smartphone or tablet. The fireplace, however, is regulated with a separate remote control.

Furthermore, the flexibility extends to the pavilion's infrastructure, as waterproof outlets can be seamlessly integrated into the columns, enhancing convenience and functionality. With such intuitive control mechanisms, the Pavilion V epitomizes sophistication and technological advancement, elevating the standards of contemporary living.



powered by
somfy

Lighting

Pavilion V

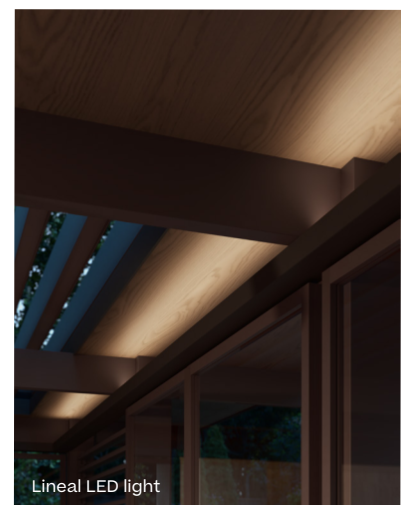
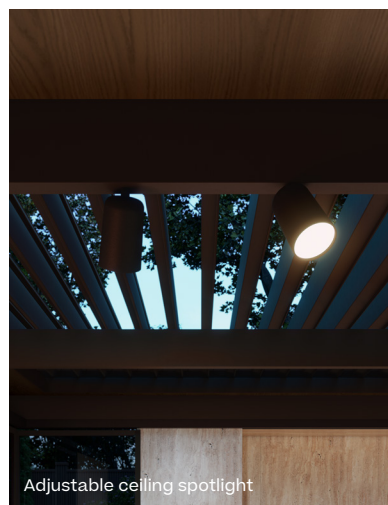
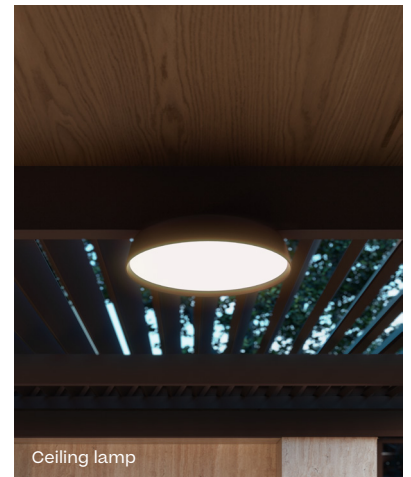
Designer
Vincent Van Duysen

Collection
Pavilion V

The V Pavilion prides itself on its extensive selection of lighting options, meticulously curated to enhance both the outer facade and inner sanctum. Along the periphery, discreet wall-mounted lights cast a gentle glow, accentuating the architectural lines and creating a welcoming aura. Delving deeper into its interior realms reveals a plethora of illuminative possibilities awaiting exploration.

Within, an eclectic mix of lighting fixtures stands ready to fulfill any lighting need. Versatile ceiling spotlights offer the freedom to focus beams precisely, whether for highlighting art pieces or illuminating workspaces. Adding a touch of sophistication are the suspended pendant lights, gracefully dangling to infuse spaces with a refined ambiance. Complementing these are the overhead luminaires, ensuring uniform brightness throughout the area. Furthermore, the perimeter interior is adorned with an assortment of lighting styles, each contributing uniquely to the overarching ambiance. From warm, inviting hues to cool, contemporary tones, every corner boasts its distinctive luminous personality.

To add to the allure, all these lighting alternatives come with the added convenience of dimmability, effortlessly adjustable to suit any mood or occasion. Whether through a dedicated remote control or the intuitive Kode App, users wield the power to tailor their lighting experience to perfection, granting them unparalleled flexibility and customization options.



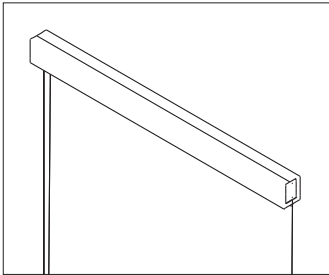
Side parts & Ceiling

Pavilion V

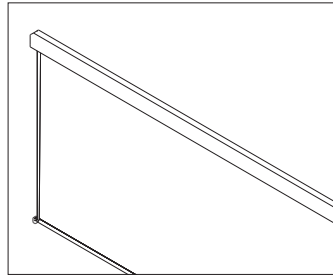
Designer
Vincent Van Duysen

Collection
Pavilion V

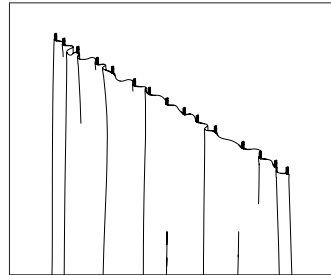
Store / Curtain



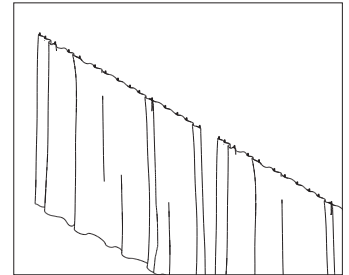
Store 2m



Store 6m

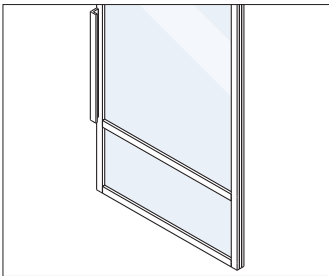


Curtain 2m

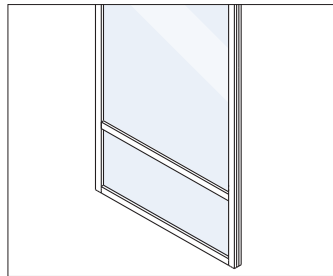


Curtain 6m

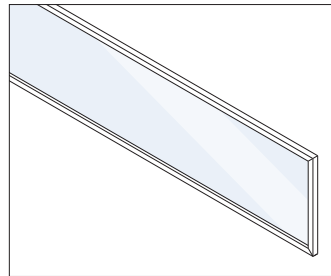
Glass



Pivoting glass door

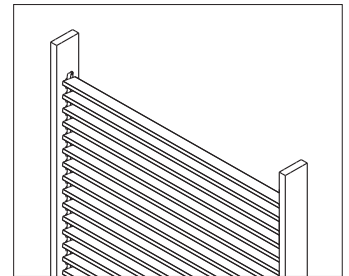


Fixed glass



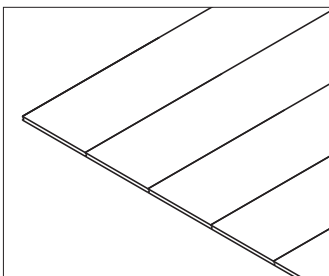
Top glass

Side Panel

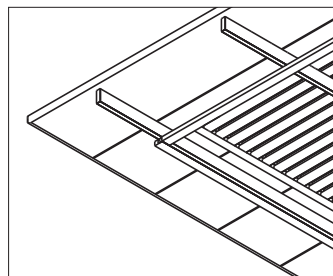


Horizontal aluminium louvers

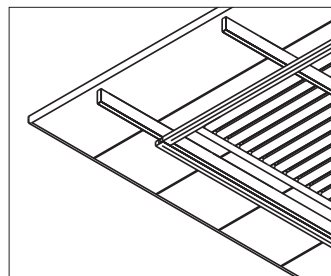
Ceiling / Canopy



Aluminium + Canopy



Bioclimatic + Canopy



Bioclimatic with LED + Canopy

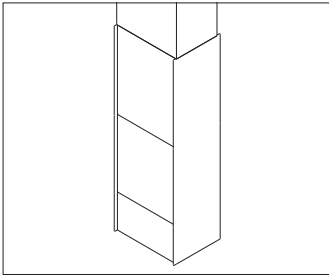
Accessories & Lighting

Pavilion V

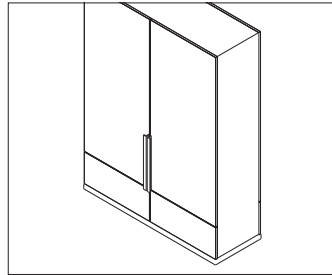
Designer
Vincent Van Duysen

Collection
Pavilion V

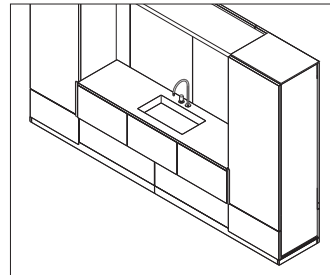
Accessories



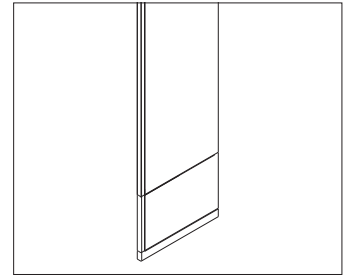
Fireplace module



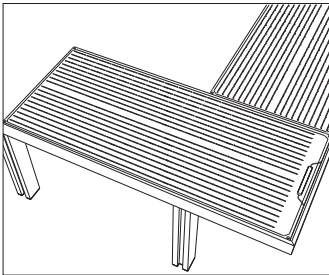
Double cabinet



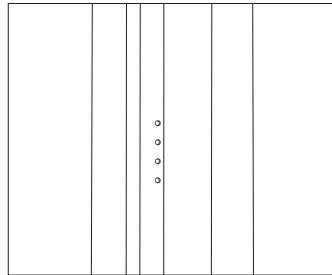
Double Cabinet + Kitchen



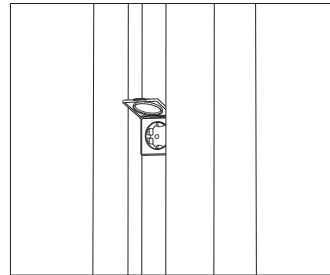
Cabinet trim



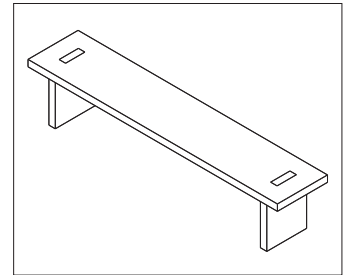
Solar panel system



Switch

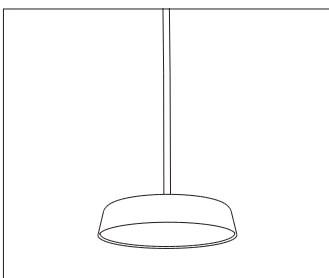


Power outlet

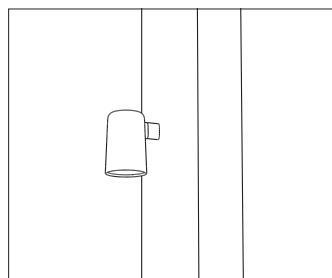


Bench

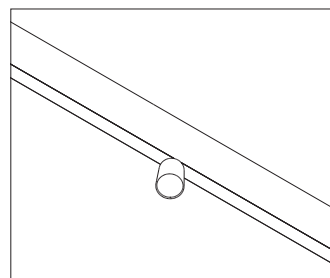
LED Lighting



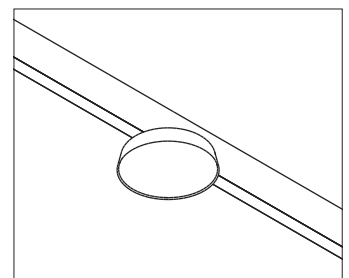
Suspension lamp



Down spotlight



Adjustable ceiling spotlight



Ceiling lamp

Structure

kettal

Profiles

Pavilion V

Designer
Vincent Van Duysen

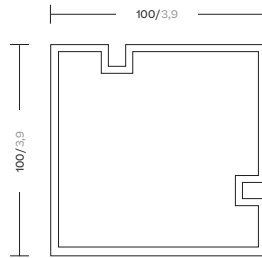
Collection
Pavilion V

Common

The columns described below are components used in both standard and bioclimatic pavilions. This means that the sides are compatible in both cases. The difference, however, is that the bioclimatic column is machined at the bottom for the drain.

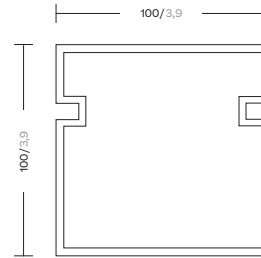
Profile with two slits that allow the side panels and anchoring base to be attached.

The material is aluminium alloy 6005 T6.



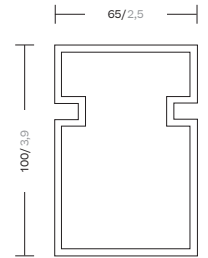
Corner Column

17 kg



Central Double Column

19,9 kg



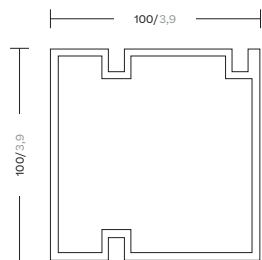
Auxiliary Column

Not considered structural

8,4 kg

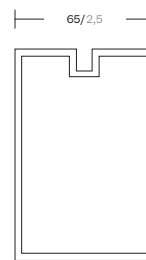
Beams

The crossbeams described below are components used exclusively in standard pavilions. Profile with several slits that are used to attach the side panels and the roofs. The material is aluminium alloy 6005 T6.



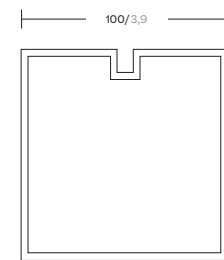
Simple Beam

4m - 30,1 kg
6m - 45,5 kg



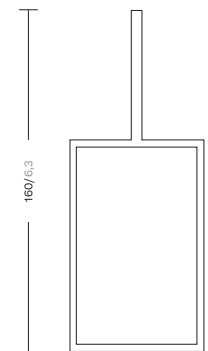
Secondary Beam (<4m)

20,53 kg



Double Beam

4m - 31,2 kg
6m - 47,1 kg

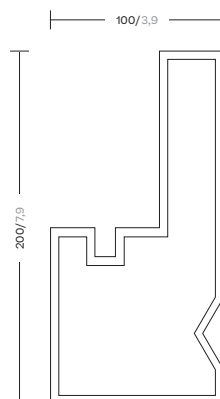


Secondary Beam (>4m)

47,69 kg

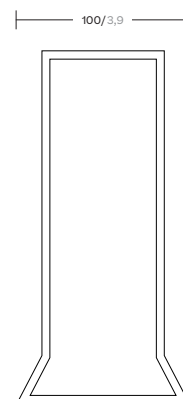
Bioclimatic

The crossbeams described below are components used exclusively in bioclimatic pavilions.



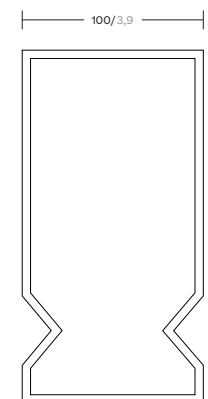
BIO Simple Beam

4m - 47,1 kg
6m - 71,2 kg



BIO Secondary Beam (>4m)

52,76 kg

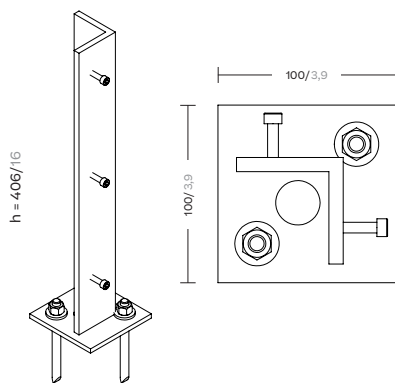


BIO Double Beam

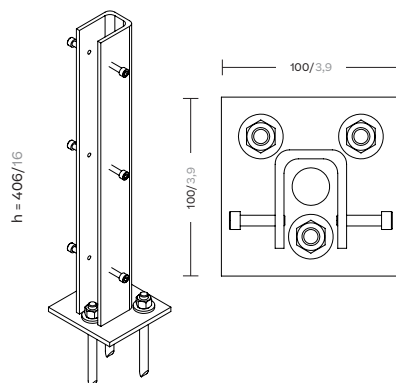
4m - 42,6 kg
6m - 64,4 kg

Footers

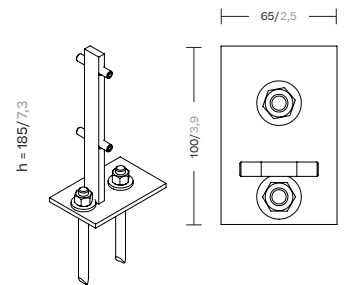
The footers are essential components that ensure the stability and durability of the structures. These elements are designed to provide a solid foundation, ensuring that the pavilions can withstand various weather and terrain conditions. The footers are made from high-quality materials and are designed to integrate seamlessly with the overall design of the pavilions.



Corner Column Footer



Double Column Footer



Auxiliary Column Footer