

Centre table Ø180  
by Doshi Levien

**kettal**

# Centre table Ø180

Designer  
Doshi Levien

Collection  
Cala

Reference  
KS2701300

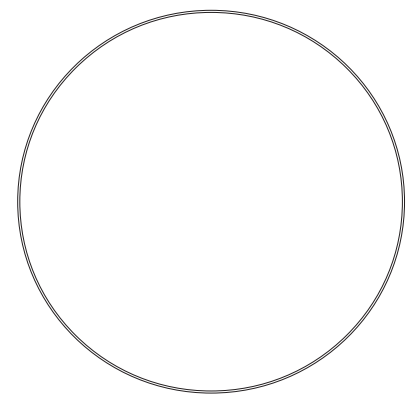
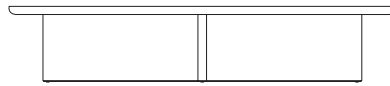
1/3

The Cala Centre Table is designed with both functionality and aesthetics in mind. Its ample tabletop surface provides space for placing beverages, decorative items, or personal belongings. The table's height and dimensions are carefully considered to ensure convenience and accessibility for users.

cm/inch

36/14,2

cm/inch



182/71,6



kettal

# Centre table Ø180

Designer  
Doshi Levien

Collection  
Cala

Reference  
KS2701300

2/3

## Materials

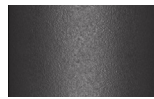
Teak  
Teak A-Grade, Eco Friendly  
Oeko-Tek

Marble  
Antioxy, Mold resistant, Easy  
Clean, Resist U.V., X-Temperature

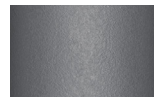
Aluminium  
Antioxy, Heavy Load, Resistant  
En-1421, Kettalize-It, Anti-  
Scratch, Easy Clean,  
Flame Retardant M1, Eco Friendly  
Ecoembes Recycling Process

## Table Top / Base / Ring Colour

## Terrain Coatings



Slate Stone  
01C



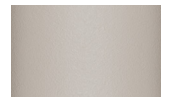
Mysty Smoke  
02C



Ash  
03C



Bone  
04C



Tuff  
05C



Wet Stone  
06C



Sand Dune  
07C



Dry Clay  
08C



Arabica  
09C



Sepia  
19C



Rose Canyon  
16C



Blossom  
20C



Ruby Dust  
18C



Sunset Glow  
17C



Terrarosa  
15C



Terracota  
14C



Amber  
13C



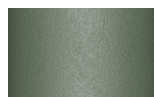
Ginger Root  
12C



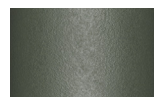
Desert Storm  
11C



African Savannah  
10C



Spring Meadow  
28C



Kombu  
29C



Forest Stream  
27C



Sea Moss  
26C



Glacier Ice  
25C



Polar Sky  
24C



Nightfall  
23C



Indigo  
22C



Wild Lupin  
21C



Galena  
33C



Bronze  
30C



Corten  
31C



Manganese  
32C

# Centre table Ø180

Designer  
Doshi Levien

Collection  
Cala

Reference  
KS2701300

3/3

## Other Characteristics

 Adjustable legs

## Maintenance

### Aluminium

Protect surfaces with barrier elements like film, paper, and peelable lacquers before placement and handling. If accidental contamination or splashing of strong alkalis or acids occurs, wash the affected area with a large amount of clean water, especially cut-outs or holes and cavities.

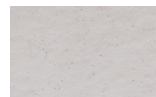
### Teak

We recommend treating the wood with sealer every three months, or more frequently in the case of hotel and catering establishments. To restore the teak to its original appearance, sand the entire surface and apply the sealer.

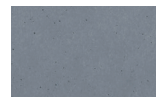
### Marble

Clean only with a soft cloth, warm water and pH neutral detergent. Do not use: acids, ammonia, abrasive powders, window cleaners and so on. Any substance with an acid pH will damage marble: lemon juice, wine, etc. Marble is treated with a waterproof sealant to protect it from damp and stains (as long as they are cleaned immediately); however, this sealant naturally wears off over time. We recommend treating the marble with sealant every three months, more frequently in the case of hotel and catering establishments.

## Table Top Colour Options



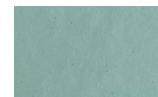
Dolomite  
373



Indian Sapphire  
371



Montana  
377



Erinite  
376



Smoky Quartz  
370



Jasper  
375



Obsidian  
372

## Table Top Colour Options



Teak  
904



Marble  
079

## Table Base Colour Options



Teak  
904