

Maia

Egg swing

by Patricia Urquiola

kettal

Egg swing

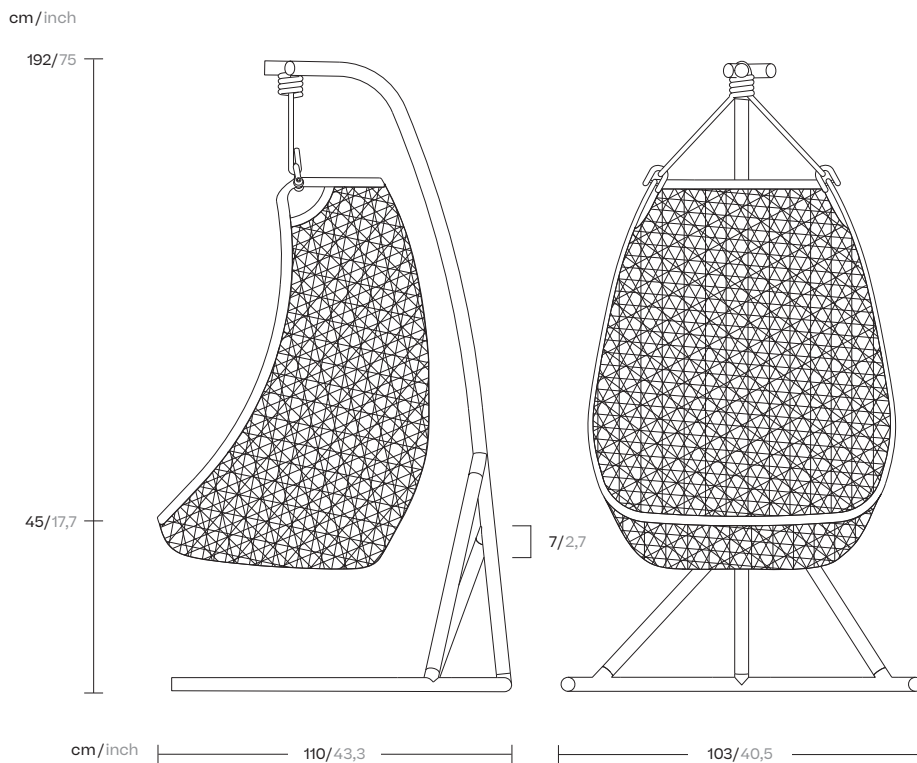
Designer
Patricia Urquiola

Collection
Maia

Reference
KS6500900

1/5

Like an architecture that is in keeping with its surroundings, the Kettal Maia, collection designed by Patricia Urquiola has a natural lightness and elegance. The design of the artisan braiding, the sturdiness of the aluminium frame and the new, Porotex and chenille fabric collection create a combination that oozes energy.



kettal

Egg swing

Designer
Patricia Urquiola

Collection
Maia

Reference
KS6500900

2/5

Materials

Synthetic Fiber

Antioxy, Heavy Load, Resistant En-1421, Kettalize-It, Anti-Scratch, Easy Clean, Flame Retardant M1, Eco Friendly Ecoembes Recycling Process

Fabric

Heavy Load 100.000 Cycles, Heavy Load Resistant 1000 Decitex, Kettalize-It, Resist U.V. En-581-4, Easy Clean, Abrasion, Resistance 30.000 Cycles, Quickdry

Aluminium

Antioxy, Heavy Load, Resistant En-1421, Kettalize-It, Anti-Scratch, Easy Clean, Flame Retardant M1, Eco Friendly Ecoembes Recycling Process

Rope

Antioxy, Resist U.V, En-581-4, Easy Clean

Maintenance

Clean with mild soap using sponge or cloth. Be gentle while cleaning, do not scrub aggressively the fabric. Once cleaned please make sure you remove soap excess.

In case of aggressive stains clean with diluted household bleach.

Clean stains promptly. The longer it remains, more difficult will be to remove.

Once cleaned the fabric steam iron the fabric. Just use steam, be carefull NOT placing the iron directly in the fabric it will get damage.

Frame/Top Colour Options

Terrain Coatings (for Aluminium)



Slate Stone
01C



Mysty Smoke
02C



Ash
03C



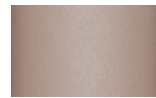
Bone
04C



Tuff
05C



Wet Stone
06C



Sand Dune
07C



Dry Clay
08C



Arabica
09C



Sepia
19C



Rose Canyon
16C



Blossom
20C



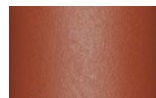
Ruby Dust
18C



Sunset Glow
17C



Terrarosa
15C



Terracota
14C



Amber
13C



Ginger Root
12C



Desert Storm
11C



African Savannah
10C



Spring Meadow
28C



Kombu
29C



Forest Stream
27C



Sea Moss
26C



Glacier Ice
25C



Polar Sky
24C



Nightfall
23C



Indigo
22C



Wild Lupin
21C



Galena
33C



Bronze
30C



Corten
31C



Manganese
32C

Egg swing

Designer
Patricia Urquiola

Collection
Maia

Reference
KS6500900

3/5

Weaving Options

Fibre



Chestnut

Weaving Options

Rope



Marengo

Egg swing

Designer
Patricia Urquiola

Collection
Maia

Reference
KS6500900

4/5

Seat/Back Cushion

Terrain Laminate Elements



Charcoal
01L



Cumulus
02L



Fog
09L



Porous Grey
08L



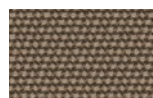
Snowcap
03L



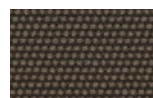
Moonstone
07L



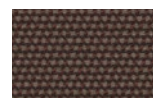
Karakum
06L



Cambium
12L



Raku
11L



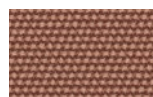
Clove
13L



Desert Rose
14L



Pink Salt
15L



Pacific Dawn
16L



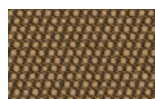
Acer
17L



Firetail
18L



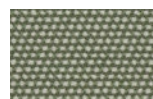
Glowing Ember
19L



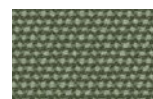
Tiger Eye
05L



Goldrush
04L



Sea Heart
22L



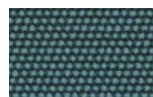
Heath
21L



Peppercorn
20L



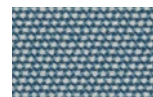
Rock Pool
23L



Tropic
24L



Skylark
25L



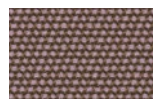
Nautica
26L



Blue Reef
27L



Cosmos
28L



Amethyst
29L

Egg swing

Designer
Patricia Urquiola

Collection
Maia

Reference
KS6500900

5/5

Maintenance

Clean with mild soap using sponge or cloth. Be gentle while cleaning, do not scrub aggressively the fabric. Once cleaned please make sure you remove soap excess.

In case of aggressive stains clean with diluted household bleach.

Clean stains promptly. The longer it remains, more difficult will be to remove.

Once cleaned the fabric steam iron the fabric. Just use steam, be carefull NOT placing the iron directly in the fabric it will get damage.

Seat & Back Cushion

Tonale Lino



White Chia
61L-61T



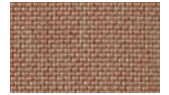
Fennel
62L-62T



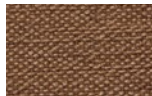
Elwendia
63L-63T



Brown Mustard
64L-64T



Kampot
65L-65T



Fenugreek
66L-66T

Seat & Back Cushion

Tonale Boucle



White Poppy
81L-81T



Sesame
82L-82T



Anise
83L-83T



Dill
84L-84T



Allspice Jamaica
85L-85T



Birds Foot
86L-86T