

Maia

Dining armchair

by Patricia Urquiola

kettal

Dining armchair

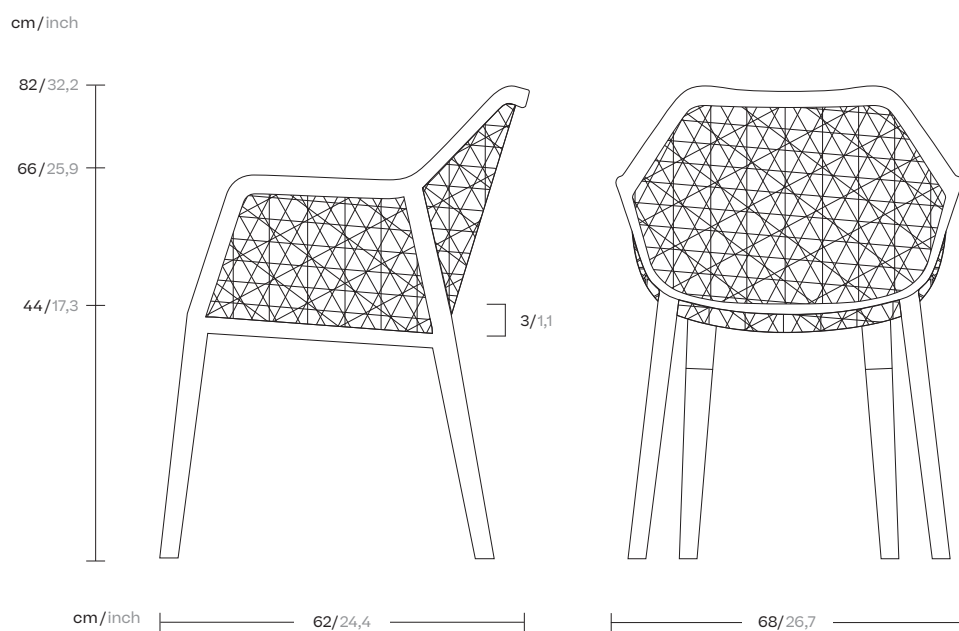
Designer
Patricia Urquiola

Collection
Maia

Reference
KS6500200

1/4

Like an architecture that is in keeping with its surroundings, the Kettal Maia, collection designed by Patricia Urquiola has a natural lightness and elegance. The design of the artisan braiding, the sturdiness of the aluminium frame and the new, Porotex and chenille fabric collection create a combination that oozes energy.



kettal

Dining armchair

Designer
Patricia Urquiola

Collection
Maia

Reference
KS6500200

2/4

Materials

Synthetic Fiber

Antioxy, Heavy Load, Resistant
En-1421, Kettalize-It, Anti-
Scratch, Easy Clean, Flame
Retardant M1, Eco Friendly
Ecoembes Recycling Process

Fabric

Heavy Load 100.000 Cycles,
Heavy Load Resistant 1000
Decitex, Kettalize-It, Resist
U.V. En-581-4, Easy Clean,
Abrasion, Resistance 30.000
Cycles, Quickdry

Teak

Eco-friendly, A-grade

Aluminium

Antioxy, Heavy Load, Resistant
En-1421, Kettalize-It, Anti-
Scratch, Easy Clean, Flame
Retardant M1, Eco Friendly
Ecoembes Recycling Process

Rope

Antioxy, Resist U.V, En-581-4, Easy
Clean

Maintenance

Clean with mild soap using
sponge or cloth. Be gentle
while cleaning, do not scrub
aggressively the fabric. Once
cleaned please make sure you
remove soap excess.

In case of aggressive stains
clean with diluted household
bleach.

Clean stains promptly. The
longer it remains, more difficult
will be to remove.

Once cleaned the fabric steam
iron the fabric. Just use steam,
be carefull NOT placing the
iron directly in the fabric it will
get damage.

Legs Finishes

Teak



Teak
904

Weaving Options

Fibre



White



Chestnut

Weaving Options

Rope



Marengo

Dining armchair

Designer
Patricia Urquiola

Collection
Maia

Reference
KS6500100

3/4

Maintenance

Clean with mild soap using sponge or cloth. Be gentle while cleaning, do not scrub aggressively the fabric. Once cleaned please make sure you remove soap excess.

In case of aggressive stains clean with diluted household bleach.

Clean stains promptly. The longer it remains, more difficult will be to remove.

Once cleaned the fabric steam iron the fabric. Just use steam, be carefull NOT placing the iron directly in the fabric it will get damage.

Seat/Back Cushion

Terrain Laminate Elements



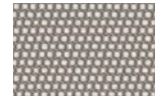
Charcoal
01L



Cumulus
02L



Fog
09L



Porous Grey
08L



Snowcap
03L



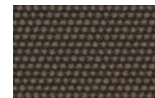
Moonstone
07L



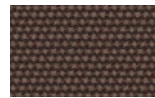
Karakum
06L



Cambium
12L



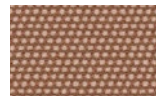
Raku
11L



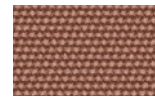
Clove
13L



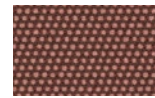
Desert Rose
14L



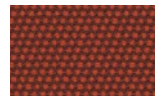
Pink Salt
15L



Pacific Dawn
16L



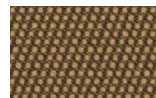
Acer
17L



Firetail
18L



Glowing Ember
19L



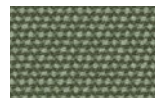
Tiger Eye
05L



Goldrush
04L



Sea Heart
22L



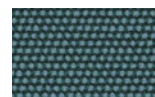
Heath
21L



Peppercorn
20L



Rock Pool
23L



Tropic
24L



Skylark
25L



Nautica
26L



Blue Reef
27L



Cosmos
28L



Amethyst
29L

Dining armchair

Designer
Patricia Urquiola

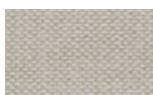
Collection
Maia

Reference
KS6500200

4/4

Seat & Back Cushion

Tonale Lino



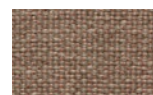
White Chia
61L-61T



Fennel
62L-62T



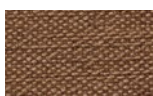
Elwendia
63L-63T



Brown Mustard
64L-64T



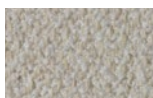
Kampot
65L-65T



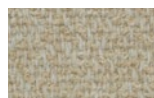
Fenugreek
66L-66T

Seat & Back Cushion

Tonale Boucle



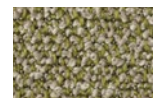
White Poppy
81L-81T



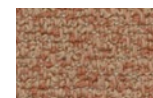
Sesame
82L-82T



Anise
83L-83T



Dill
84L-84T



Allspice Jamaica
85L-85T



Birds Foot
86L-86T