

Plumon

Centre table 120x120,
by Patricia Urquiola

kettal

Centre table 120x120

Designer
Patricia Urquiola

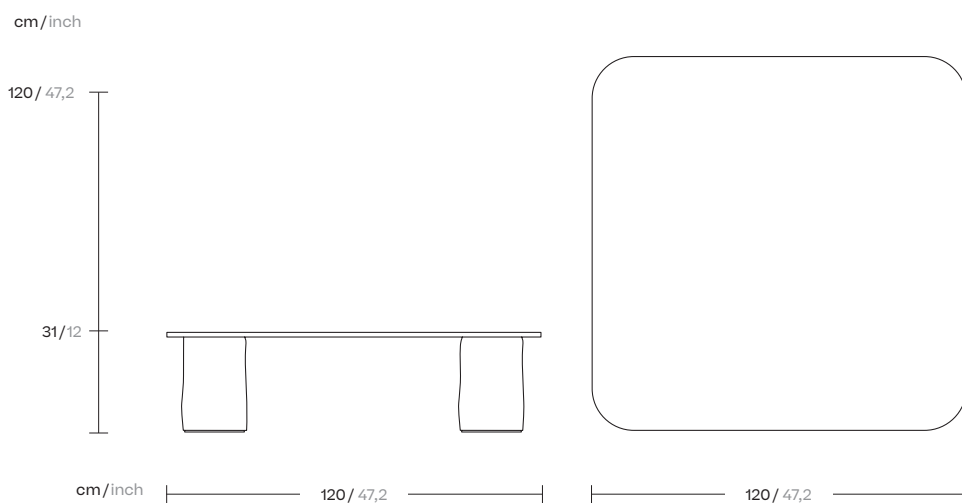
Collection
Plumon

Reference
KSA801000

1/2

Plumon is based on the concept of clothing, on dressing and undressing furniture.

For Plumon, Urquiola designs a light structure, on which a tailored and padded dress is 'moored', wrapped. This ribbed padding, characterized by stitching, as well as being an aesthetic figure, fulfills the comfort of the product. It is the fit that guides the aesthetics. With a few simple gestures, the dress is placed on the rigid teak structure and embraces it. An extreme ease of use that becomes a real plus for an outdoor collection.



kettal

Centre table 120x120

Designer
Patricia Urquiola

Collection
Plumon

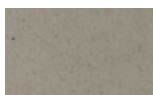
Reference
KSA801000

2/2

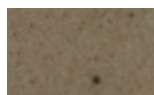
Materials

Ceramic
Glass table top

Leg / Top Color Options



Topaz
383



Bornite
384



Green Opal
388

Glaze Paints
