

Side Table Ø48  
by Doshi Levien

**kettal**

# Side table Ø48

Designer  
Doshi Levien

Collection  
Cala

Reference  
KS2701100

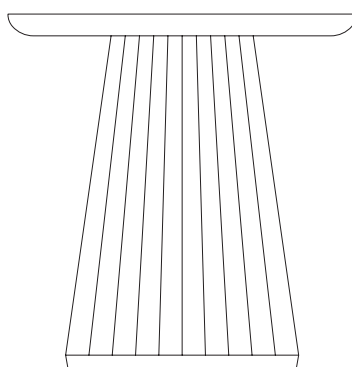
1/3

The Cala side table, designed by Doshi Levien, is a stunning piece of furniture that stands out for its unique and modern design.

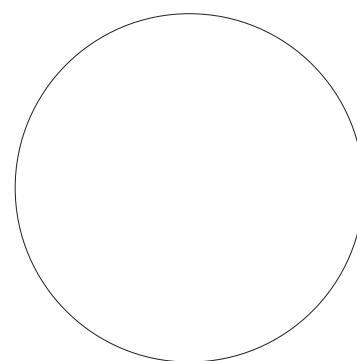
The base is made from high-quality aluminum and is available in a wide range of finishes.

cm/inch

49/19,2



cm/inch



48/18,8



kettal

# Side table Ø48

Designer  
Doshi Levien

Collection  
Cala

Reference  
KS2701100

2/3

## Materials

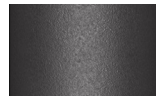
Teak  
Teak A-Grade, Eco Friendly  
Oeko-Tek

Marble  
Antioxy, Mold resistant, Easy  
Clean, Resist U.V., X-Temperature

Aluminium  
Antioxy, Heavy Load, Resistant  
En-1421, Kettalize-It, Anti-  
Scratch, Easy Clean,  
Flame Retardant M1, Eco Friendly  
Ecoembes Recycling Process

## Table Top / Base Colour Options

## Terrain Coatings



Slate Stone  
01C



Mysty Smoke  
02C



Ash  
03C



Bone  
04C



Tuff  
05C



Wet Stone  
06C



Sand Dune  
07C



Dry Clay  
08C



Arabica  
09C



Sepia  
19C



Rose Canyon  
16C



Blossom  
20C



Ruby Dust  
18C



Sunset Glow  
17C



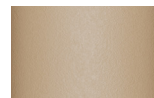
Terrarosa  
15C



Terracota  
14C



Amber  
13C



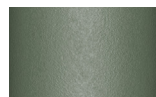
Ginger Root  
12C



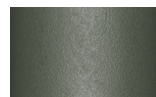
Desert Storm  
11C



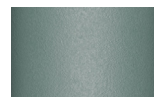
African Savannah  
10C



Spring Meadow  
28C



Kombu  
29C



Forest Stream  
27C



Sea Moss  
26C



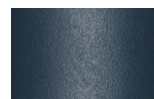
Glacier Ice  
25C



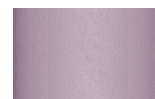
Polar Sky  
24C



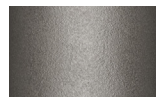
Nightfall  
23C



Indigo  
22C



Wild Lupin  
21C



Galena  
33C



Bronze  
30C



Corten  
31C



Manganese  
32C

# Side table Ø48


Designer  
Doshi Levien

Collection  
Cala

Reference  
KS2701100

3/3

## Other Characteristics

 Adjustable legs

## Maintenance

### Aluminium

Protect surfaces with barrier elements like film, paper, and peelable lacquers before placement and handling. If accidental contamination or splashing of strong alkalis or acids occurs, wash the affected area with a large amount of clean water, especially cut-outs or holes and cavities.

### Teak

We recommend treating the wood with sealer every three months, or more frequently in the case of hotel and catering establishments. To restore the teak to its original appearance, sand the entire surface and apply the sealer.

### Marble

Clean only with a soft cloth, warm water and pH neutral detergent. Do not use: acids, ammonia, abrasive powders, window cleaners and so on. Any substance with an acid pH will damage marble: lemon juice, wine, etc. Marble is treated with a waterproof sealant to protect it from damp and stains (as long as they are cleaned immediately); however, this sealant naturally wears off over time. We recommend treating the marble with sealant every three months, more frequently in the case of hotel and catering establishments.

## Table Top Colour Options



Teak  
904



Marble  
079

## Other

## Table Top Colour Options



Dolomite  
373



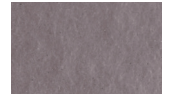
Indian Sapphire  
371



Montana  
377



Erinite  
376



Black Diamond  
374



Smoky Quartz  
370



Jasper  
375



Obsidian  
372

## Glaze