

Landscape
Teak Side table
by Kettal Studio

kettal

Teak Side table

Designer
Kettal Studio

Collection
Landscape

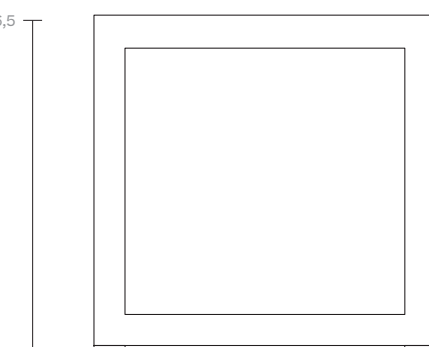
Reference
KS9402400

1/2

Landscape aims to be part of a project. It is not understood as an item apart, but instead relates to its environment and melds with it. It is the project that is important, not the product, and this is its essence. Its rationalist construction seeks to give order, form and structure to the outdoor space, although, in terms of function, it has been designed to give shelter: to shade and cool or protect from the rain and wind.

cm/inch

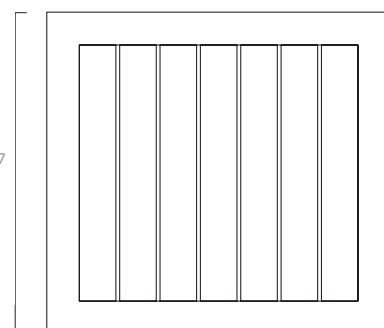
42/16,5



cm/inch

43/16,9

40/15,7



43/16,9



kettal

Teak

Side table

Designer
Kettal Studio

Collection
Landscape

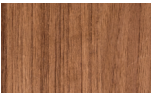
Reference
KS9402400

Materials

Aluminium
Antioxy, Heavy Load, Resistant
En-1421, Kettalize-It, Anti-
Scratch, Easy Clean,
Flame Retardant M1, Eco Friendly
Ecoembes Recycling Process

Teak
Teak A-Grade, Eco Friendly
Oeko-Tek

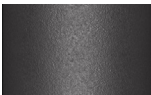
Table Top



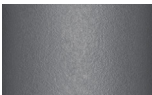
Teak
904

Frame Colour Options

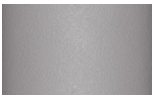
Terrain Coatings (for Aluminium)



Slate Stone
01C



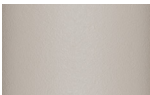
Mysty Smoke
02C



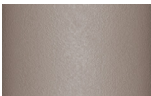
Ash
03C



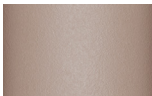
Bone
04C



Tuff
05C



Wet Stone
06C



Sand Dune
07C



Dry Clay
08C



Arabica
09C



Sepia
19C



Rose Canyon
16C



Blossom
20C



Ruby Dust
18C



Sunset Glow
17C



Terrarosa
15C



Terracota
14C



Amber
13C



Ginger Root
12C



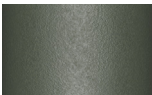
Desert Storm
11C



African Savannah
10C



Spring Meadow
28C



Kombu
29C



Forest Stream
27C



Sea Moss
26C



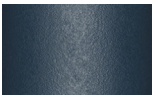
Glacier Ice
25C



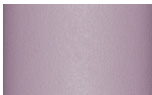
Polar Sky
24C



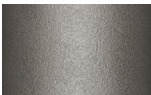
Nightfall
23C



Indigo
22C



Wild Lupin
21C



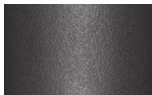
Galena
33C



Bronze
30C



Corten
31C



Manganese
32C

Maintenance

Clean with mild soap using sponge or cloth. Be gentle while cleaning, do not scrub aggressively the fabric. Once cleaned please make sure you remove soap excess.
In case of aggressive stains clean with diluted household bleach.
Clean stains promptly. The longer it remains, more difficult will be to remove.

Once cleaned the fabric steam iron the fabric. Just use steam, be carefull NOT placing the iron directly in the fabric it will get damage.