

Kall,
by Kettal Studio

kettal

Kall S,
by Kettal Studio

kettal

Kall S

Designer
Kettal Studio

Collection
Kall

Kall is a new 'Phonebooth' that prioritizes privacy and aesthetics. The focus is on creating a warm and pleasant atmosphere, with attention paid to the environmental and aesthetic aspects of the product.

The technology is integrated into the product in a subtle way, with everything electronically controlled. The aim is to provide a simple and enjoyable user experience, with the option for more tech-savvy users to use a touch screen control system.

Kall S has a stool and an adjustable table (optional). Convenient to sit down for one-on-one online meetings in private. The exceptional acoustics and physical comfort allow for better communication, as well as concentration.

Specifications

- Glazed door
- Wheels
- Wooden frame
- Acoustic panels
- Absorption system
- Leveling feet
- USB A+C
- Curtains (Opt.)
- Faced external wall
- Air ventilation system
- LED lighting
- PIR sensor
- Integrated stool
- Adjustable height table (Opt.)



* Stool is optional

Kall S

Designer
Kettal Studio

Collection
Kall



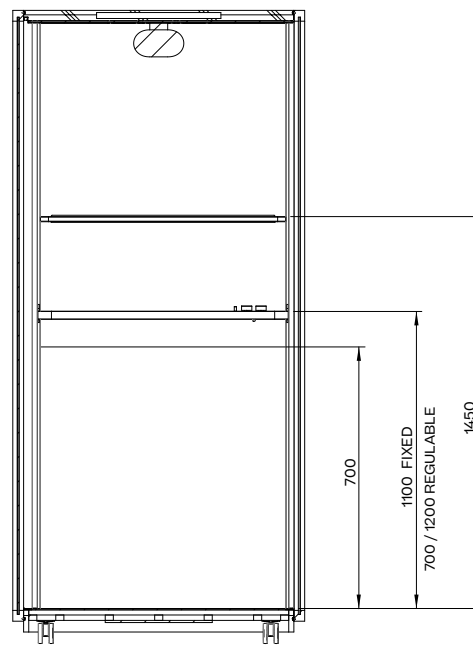
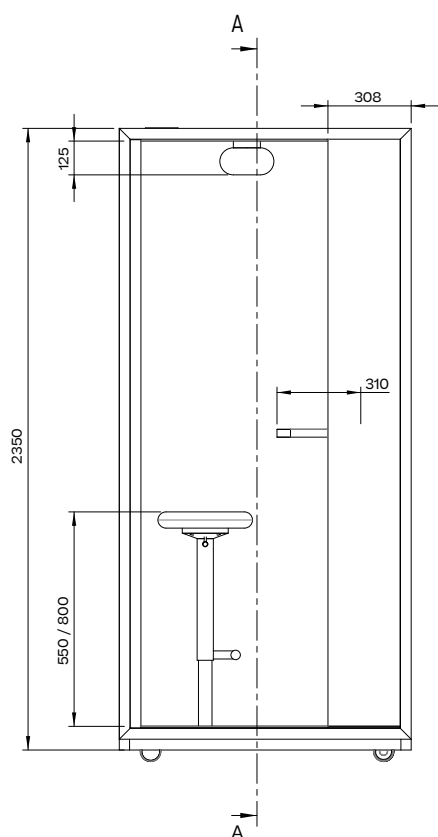
* Stool is optional

Kall S

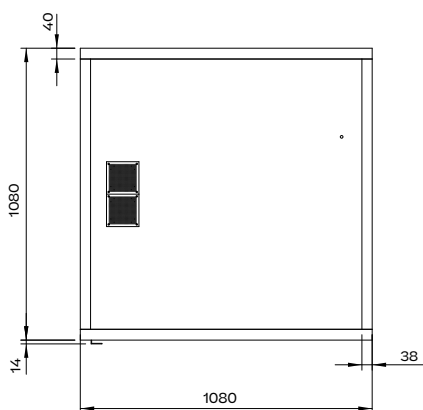
Dimensions

Designer
Kettal Studio

Collection
Kall



SECTION A-A
SCALE 1:20



Dimensions (mm/inch)

Exterior - Interior

Height	2350 / 92,5 - 2170 / 85,4
Width	1080 / 42,5 - 860 / 33,8
Depth	1080 / 92,5 - 1040 / 40,9
Tabletop (h x w x d)	1100 x 925 x 310 / 43,3 x 36,4 x 12,2
Shelving	1450 x 910 x 60 / 57 x 35,8 x 23,6

Kall S Features

Designer
Kettal Studio

Collection
Kall



* Stools are optional



LED Lighting with PIR sensor & regulable



Wheels for an easy transport



Leveling feet



Sustainably Soundproof



Adjustable desk (Optional)



Integrated stool or swivel armchair (Optional)



Silent ventilation system



Plug & Play 100-240 V + USB A + USB C



More accessories: Shelf, hanger...



PIR sensor



Fast Assembly



Modularity



UL Components



CE Certified

Kall S

Features

Designer
Kettal Studio

Collection
Kall

Silent Ventilation



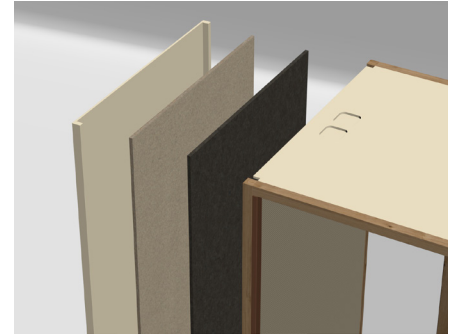
The air enters through the floor (back of the stool) and comes out through the gap of each side of the table panel (1 cm of space) that is used to raise and lower the table.
The cabin has a flow rate of 115m³/h (32 l/s) 1 air change per minute. The nominal flow rate of the fans is 120m³/h.

Integrated wheels and Leveling feet



To ensure the stability of the cabin, the position of the regulator feet should be adjusted to raise the wheels. This procedure can be performed using a wrench, as the regulator feet have a nut that allows for adjustment. To move the cabin, it is necessary to raise the regulator feet again.

Sustainably Soundproof



Class B, according ISO 23351-1
Test: 28,9 dB (D_{SA})
Acoustic glass panels 3+3 with 35 dB.
Wood panel + PET + Foamed fabric.

Test Report



Analog Controller



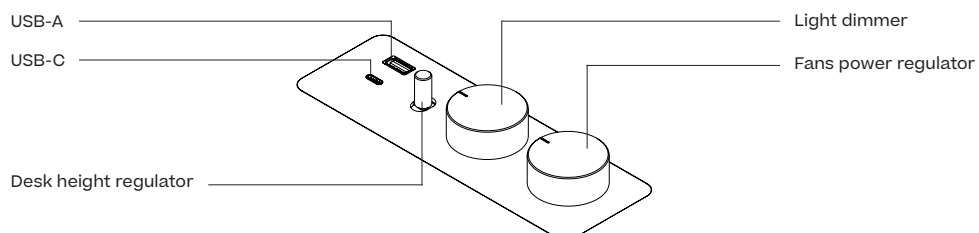
Adjustable table (Opt.). Plug USB-A / USB-C / shelf light dimmer, fans power regulator and desk height regulator



Non-adjustable table (Opt.). Plug USB-A / USB-C / shelf light dimmer, fans power regulator



Control by screen. (Optional)
Kern Screen / USB-A / USB-C



Kall S Features

Designer
Kettal Studio

Collection
Kall

LED Ceiling Light



LED Ceiling Light
3000K (Dimmable)
Ambient Lighting
Diameter 200mm

LED Shelf Light



LED Shelf Light
3000K (Dimmable)
Task Lighting

Adjustable Desk (Opt.)

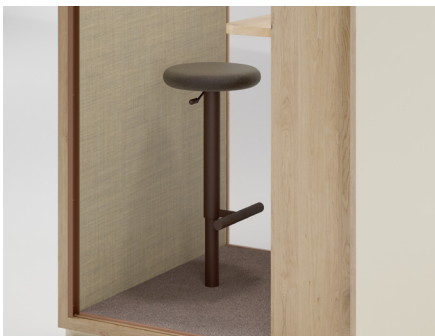


The table height is adjustable by the cylindrical switch on the controller.

It can be adjusted from 700 to 1200 mm in height. When non-adjustable height is 1100mm.

It supports a maximum weight of 100 kg.

Adjustable Stool



Adjustable via lever located under the seat.

Adjustable from 550 to 800 mm.
It supports a maximum weight of 200 kg.

Shelf



To support your iPad, mobile phone, or complete the space with a picture or different decorative elements.

PIR Sensor



Located under the Analog Controller.

The described system operates in three main states: in the idle state, the cabin's lights and fans are off; when occupied, the PIR sensor triggers the cabin's lights and fans, with levels set by corresponding potentiometers (ranging from 10% to 100%); when unoccupied, the lights and fans remain on, turning off after an adjustable period (3 to 60 minutes) set by an internal potentiometer on the CPU PCB, which is not user-accessible.

Kall S Features

Designer
Kettal Studio

Collection
Kall

Hanger / Coat rack



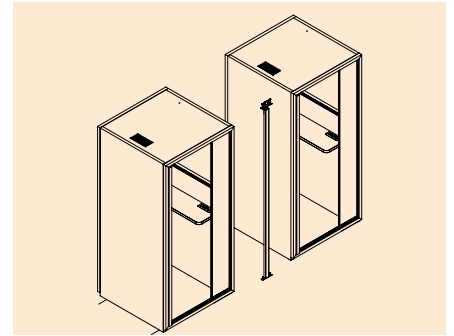
A hanger to hang your coat, purse, or other garments and keep your workspace clear.

Curtains



Curtains provide privacy and give a more aesthetic and personalized look to the cabin.

Modularity



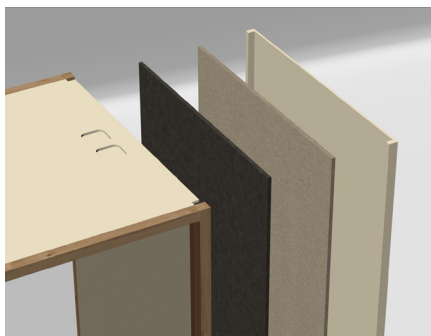
Our Kall booths can be combined in different ways to create work environments according to the needs of each user and adapt to different types of space.

Plug & Play



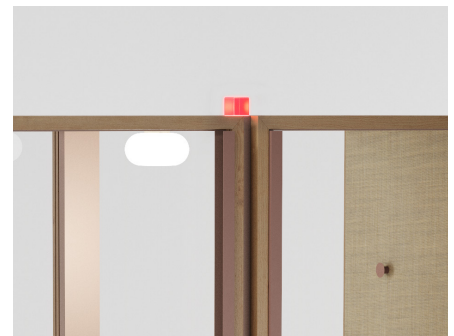
The booth can be connected either from the ceiling or the floor, according to the customer's preference. You will simply need to connect the cable to the ceiling or the floor.

Fast Assembly



This product can be assembled in 90 minutes.

Occupancy Light (Opt.)



The Busy Light indicates whether the booth is occupied or not. When occupied, it emits a red light, and when it's available, the light turns green.

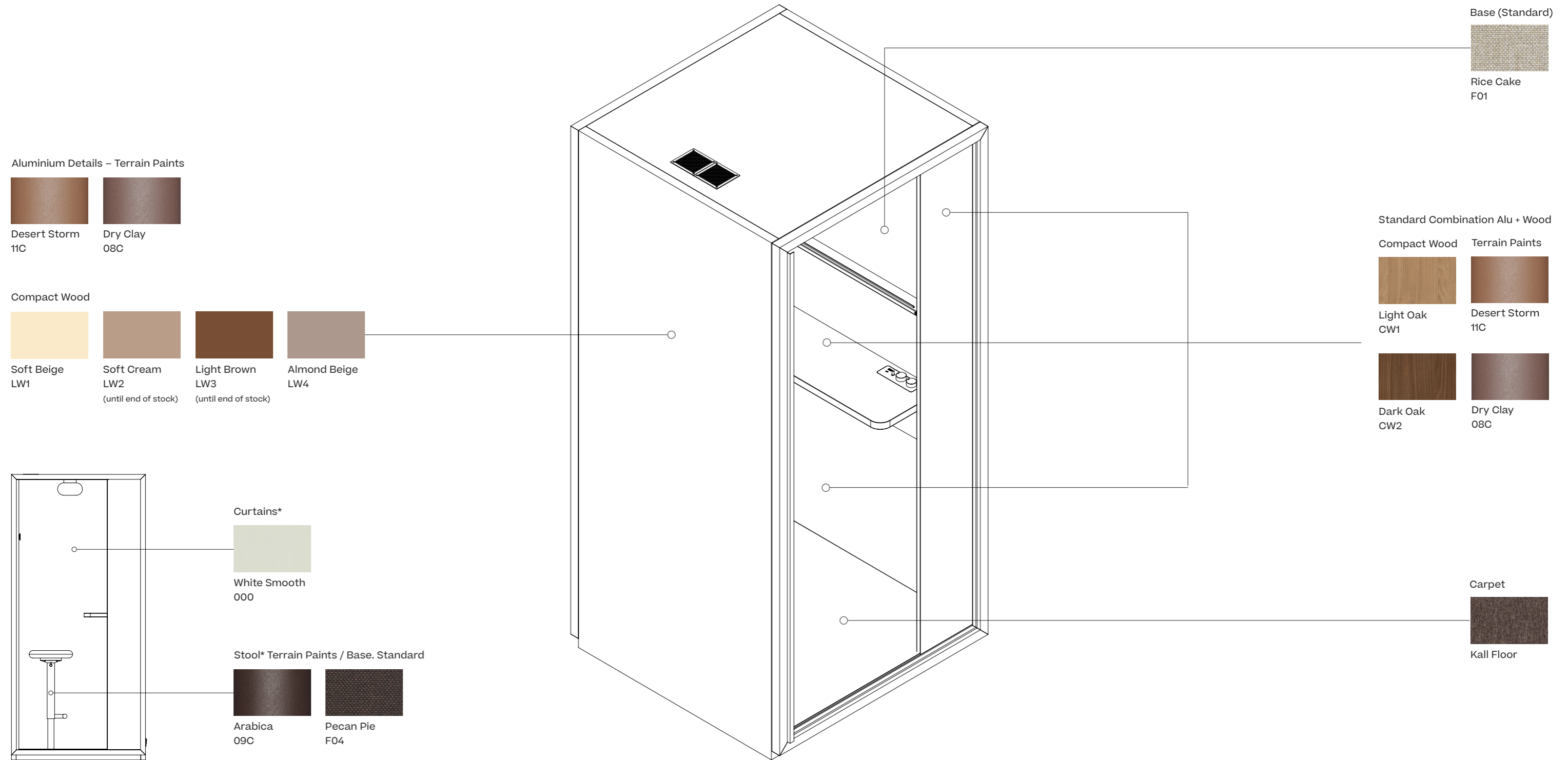
CE Certified & UL Recognized

This product is designed in accordance with European regulations (CE) and UL listed (USA).

Environmental Product Declaration

Scan this QR code to view the EPD report and the results of the Kall Booth family.





Kall M,
by Kettal Studio

kettal

Kall in a wider dimension that accommodates a swivel armchair. Ideal for meetings in a more relaxed working posture. The exceptional acoustics and physical comfort allow for better communication, as well as concentration.

Specifications

- Glazed door
- Pivot door
- Wooden frame
- Acoustic panels
- Absorption system
- Leveling feet
- USB A+C
- Wheels
- Curtains (Opt.)
- Faced external wall
- Air ventilation system
- LED lighting
- PIR sensor
- Integrated swivel armchair
- Regulable Integrated table (Opt.)



* Swivel armchair is optional

Kall M

Designer
Kettal Studio

Collection
Kall



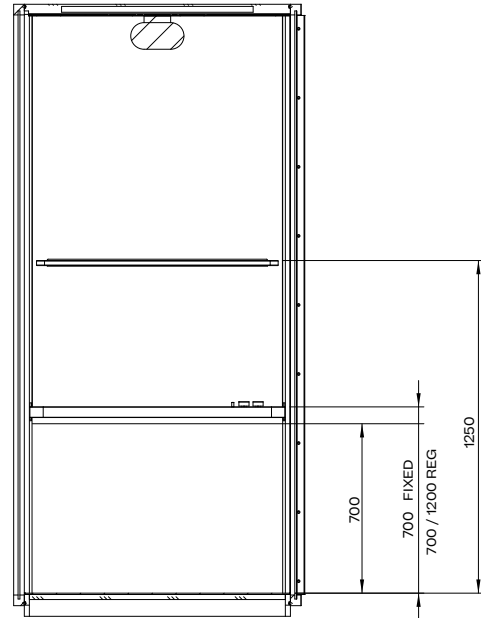
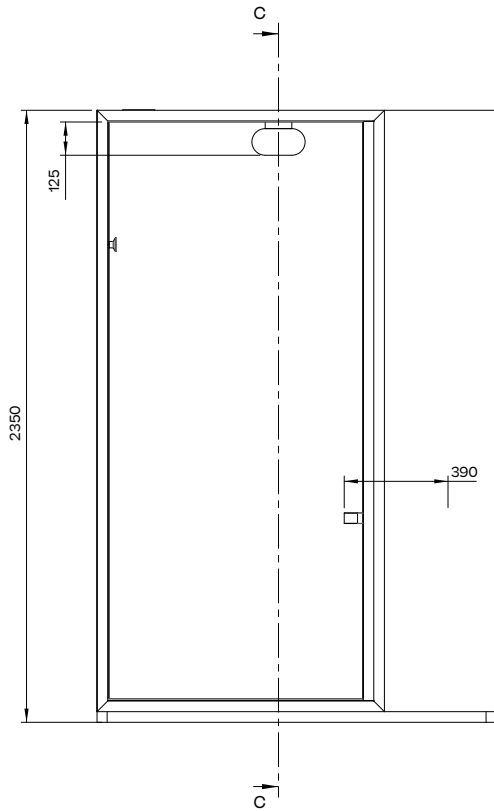
* Swivel armchair is optional

Kall M

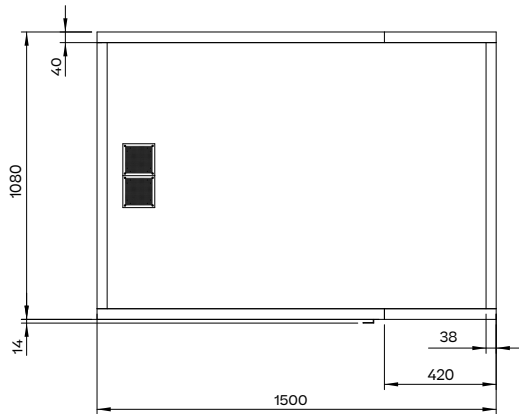
Dimensions

Designer
Kettal Studio

Collection
Kall



SECTION C-C
SCALE 1 : 20



Dimensions (mm/inch)

Exterior - Interior

Height	2350 / 90,5 - 2170 / 85,4
Width	1500 / 59 - 1270 / 50
Depth	1080 / 42,5 - 1040 / 40,9
Tabletop (h x w x d)	700 x 960 x 390 / 26,4 x 37,8 x 15,3
Shelving	1450 x 910 x 60 / 57 x 35,8 x 23,6

Kall M Features

Designer
Kettal Studio

Collection
Kall



* Swivel armchair is optional



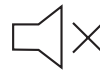
LED Lighting with PIR sensor & regulable



Wheels for an easy transport



Leveling feet



Sustainably Soundproof



Integrated Desk (adjustable)



Integrated stool or swivel armchair (Optional)



Silent ventilation system



Plug & Play 100-240 V + USB A + USB C



More accessories: Shelf, hanger...



PIR sensor



Fast Assembly



Modularity



UL Components



CE Certified

Kall M

Features

Designer
Kettal Studio

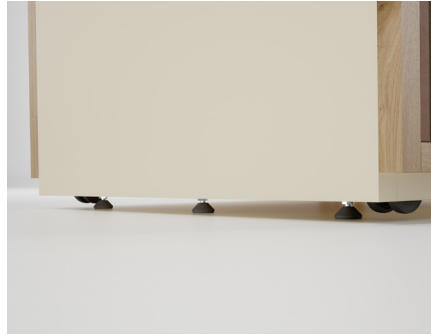
Collection
Kall

Silent Ventilation



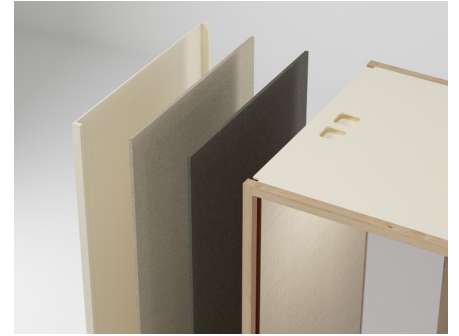
The air enters through the floor (back of the stool) and comes out through the gap of each side of the table panel (1 cm of space) that is used to raise and lower the table.
The cabin has a flow rate of 115m³/h (32 l/s) 60 air renewals/hour. The nominal flow rate of the fans is 120m³/h.

Integrated wheels and Leveling feet



To ensure the stability of the cabin, the position of the regulator feet should be adjusted to raise the wheels. This procedure can be performed using a wrench, as the regulator feet have a nut that allows for adjustment. To move the cabin, it is necessary to raise the regulator feet again.

Sustainably Soundproof



Class B, according ISO 23351-1
Test: 28,9 dB (D_{SA})
Acoustic glass panels 3+3 with 35 dB.
Wood panel + PET + Foamed fabric.

Test Report



Analog Controller



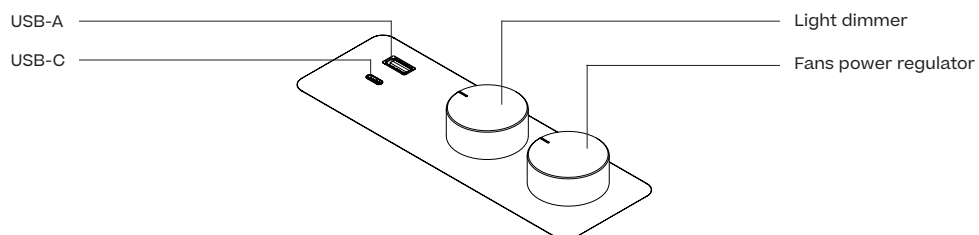
Adjustable table (Opt.). Plug USB-A / USB-C / shelf light dimmer, fans power regulator and desk height regulator



Non-adjustable table (Opt.). Plug USB-A / USB-C / shelf light dimmer, fans power regulator



Control by screen. (Optional)
Kern Screen / USB-A / USB-C



Kall M Features

Designer
Kettal Studio

Collection
Kall

LED Ceiling Light



LED Ceiling Light
3000K (Dimmable)
Ambient Lighting

LED Shelf Light



LED Shelf Light
3000K (Dimmable)
Task Lighting

Adjustable Desk



The table height is adjustable by the cylindrical switch on the controller.


It can be adjusted from 700 to 1200 mm in height. When non-adjustable height is 1100mm.

It supports a maximum weight of 100 kg.

Swivel armchair



This versatile piece of furniture provides a comfortable and stylish seating option that can be easily adjusted to face any direction. With its sleek design and smooth rotation, the Swivel Armchair is ideal for comfortable meetings.

 Not included

Shelf



To support your iPad, mobile phone, or complete the space with a picture or different decorative elements.

PIR Sensor



Located under the Analog Controller.

The described system operates in three main states: in the idle state, the cabin's lights and fans are off; when occupied, the PIR sensor triggers the cabin's lights and fans, with levels set by corresponding potentiometers (ranging from 10% to 100%); when unoccupied, the lights and fans remain on, turning off after an adjustable period (3 to 60 minutes) set by an internal potentiometer on the CPU PCB, which is not user-accessible.

Kall M Features

Designer
Kettal Studio

Collection
Kall

Hanger / Coat rack



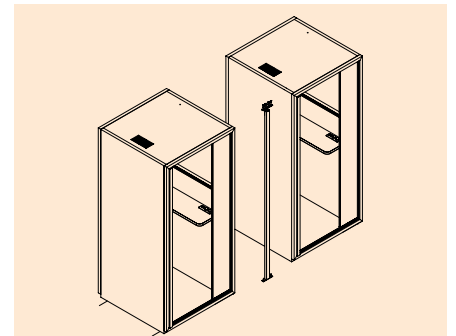
A hanger to hang your coat, purse, or other garments and keep your workspace clear.

Curtains



Curtains provide privacy and give a more aesthetic and personalized look to the cabin.

Modularity



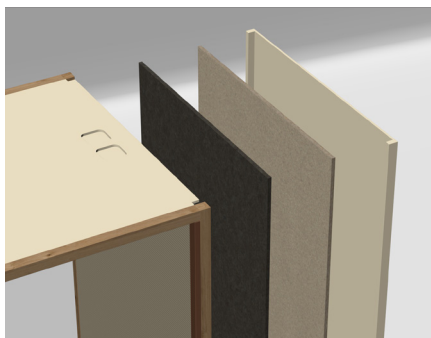
Our Kall booths can be combined in different ways to create work environments according to the needs of each user and adapt to different types of space.

Plug & Play



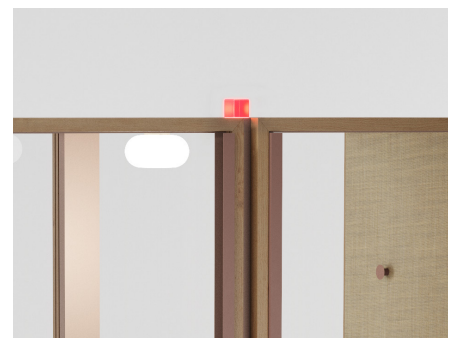
The booth can be connected either from the ceiling or the floor, according to the customer's preference. You will simply need to connect the cable to the ceiling or the floor.

Fast Assembly



This product can be assembled in 90 minutes.

Occupancy Light (Opt.)



The Busy Light indicates whether the booth is occupied or not. When occupied, it emits a red light, and when it's available, the light turns green.

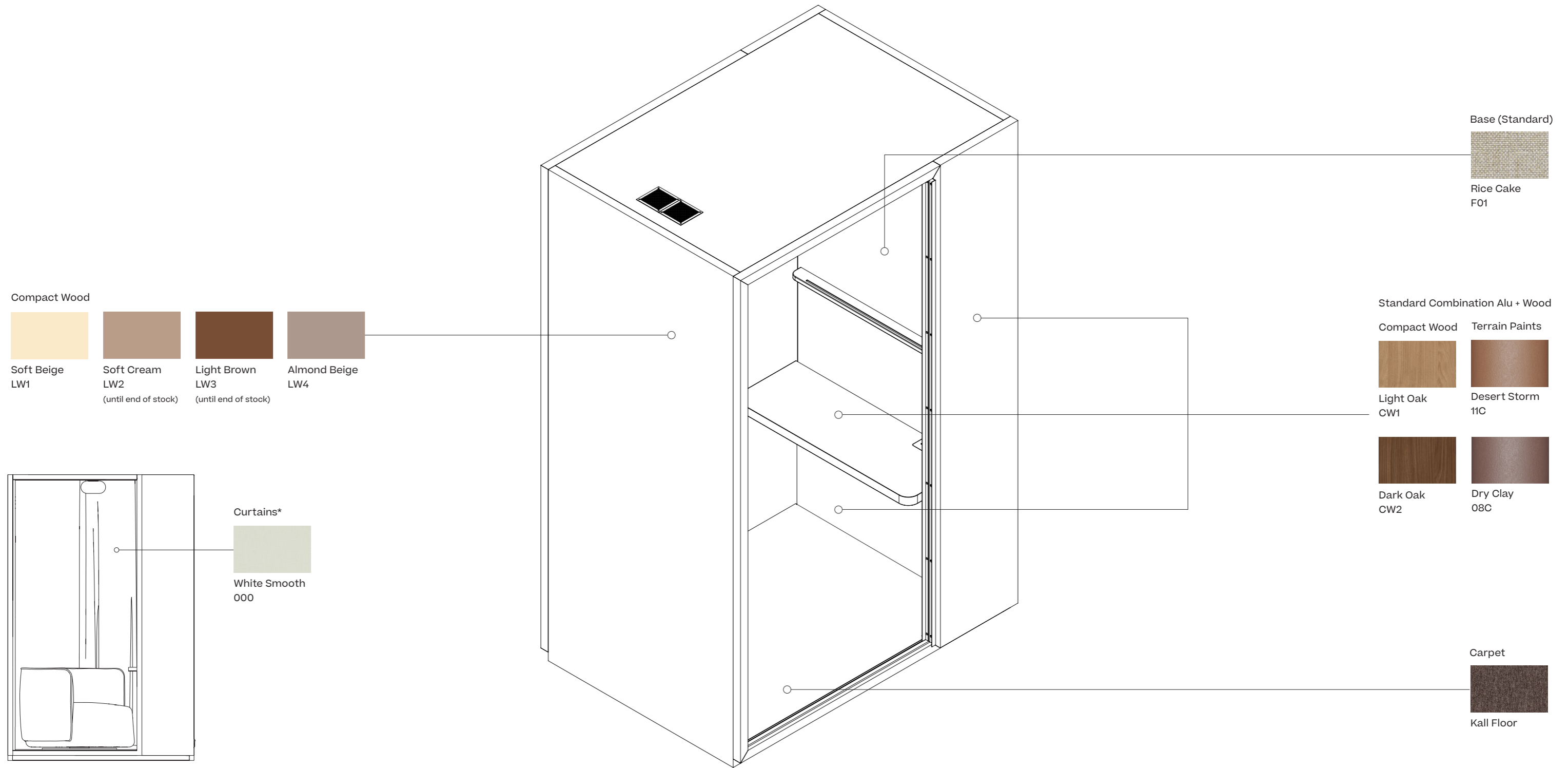
CE Certified & UL Recognized

This product is designed in accordance with European regulations (CE) and UL listed (USA).

Environmental Product Declaration

Scan this QR code to view the EPD report and the results of the Kall Booth family.





Kall M Seater Finishes

Designer
Kettal Studio

Collection
Kall

Swivel armchair

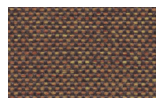
Base Fabric



Rice Cake
F01



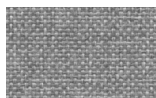
Pecan Pie
F04



Indian Sunset
F05



Burlywood
F06

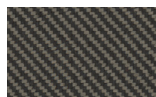


Stardew
F09

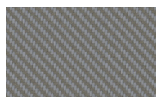


Orion Grey
F10

Relate



V07



V04



V02



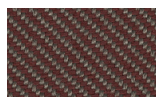
V09



V10



V12



V13



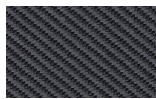
V17



V18



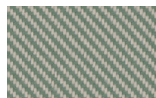
V20



V06



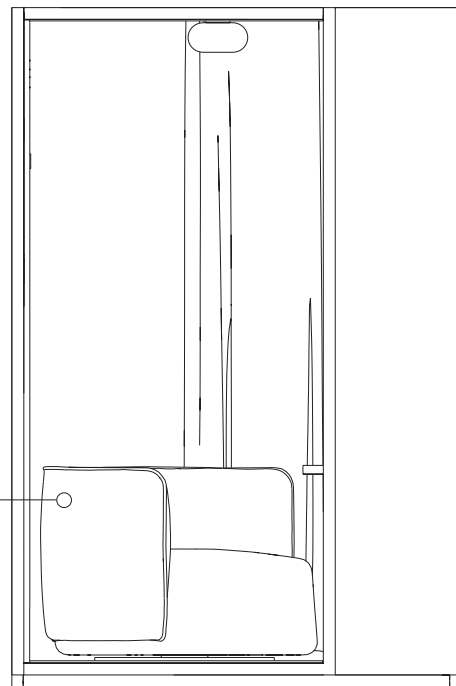
V25



V31



V32



Kall L,
by Kettal Studio

kettal

Kall with for two people with two swivel clubs or stools and an adjustable table (optional). Convenient to sit down for one-on-one meetings in private. The exceptional acoustics and physical comfort allow for better communication, as well as concentration.

Specifications

- Glazed door
- Wheels
- Wooden frame
- Acoustic panels
- Absorption system
- Leveling feet
- USB A+C
- Curtains (Opt.)
- Faced external wall
- Air ventilation system
- LED lighting
- PIR sensor
- Integrated stool (Opt.)
- Swivel armchair (Opt.)
- Adjustable height table



* Swivel armchairs are optional

Kall L

Designer
Kettal Studio

Collection
Kall



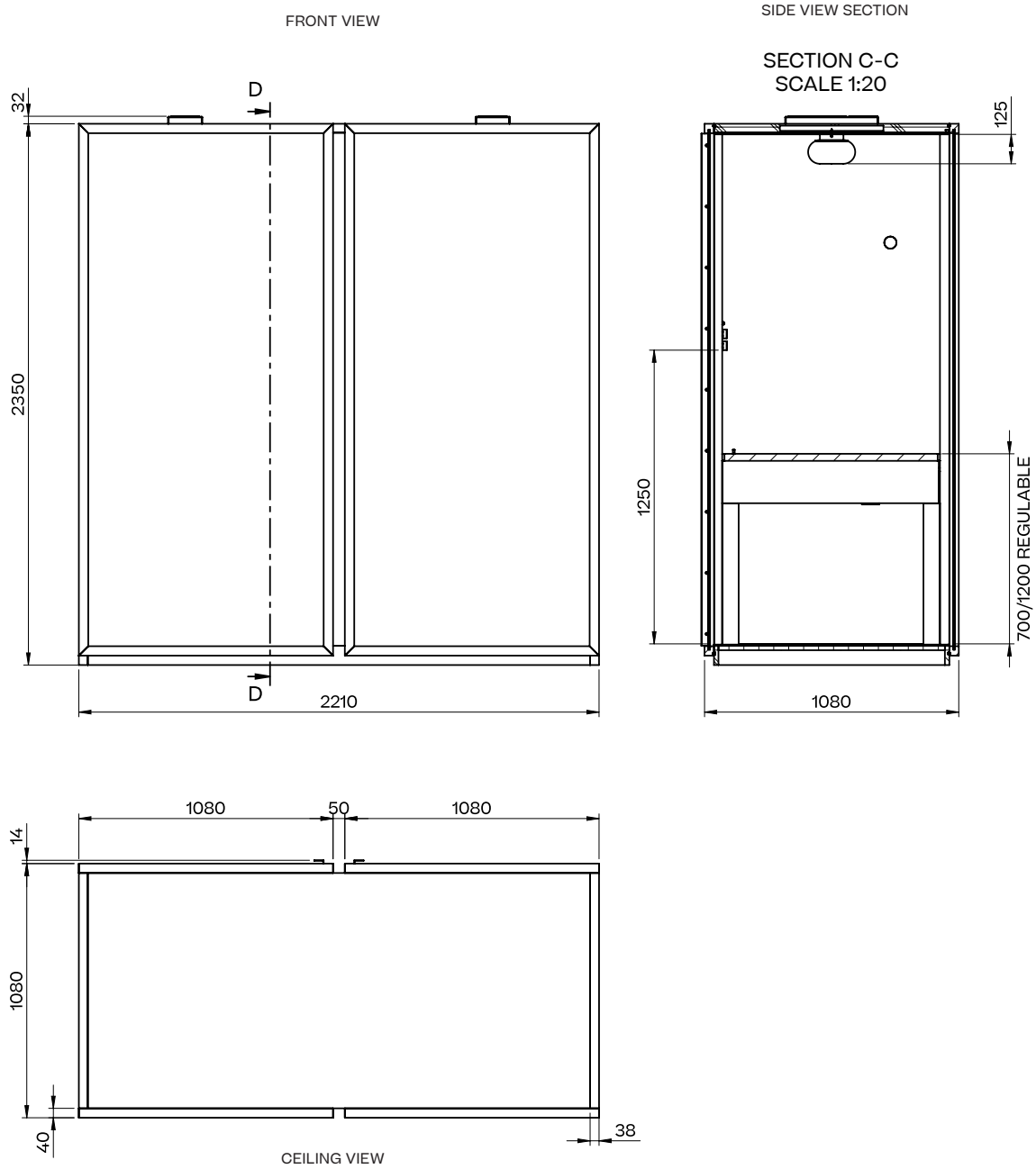
* Swivel armchairs are optional

Kall L

Dimensions

Designer
Kettal Studio

Collection
Kall



Dimensions (mm/inch)

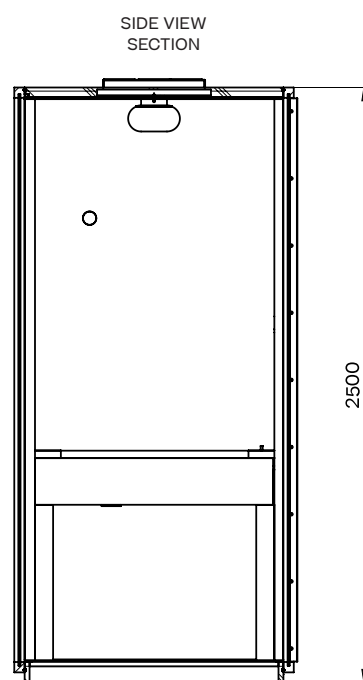
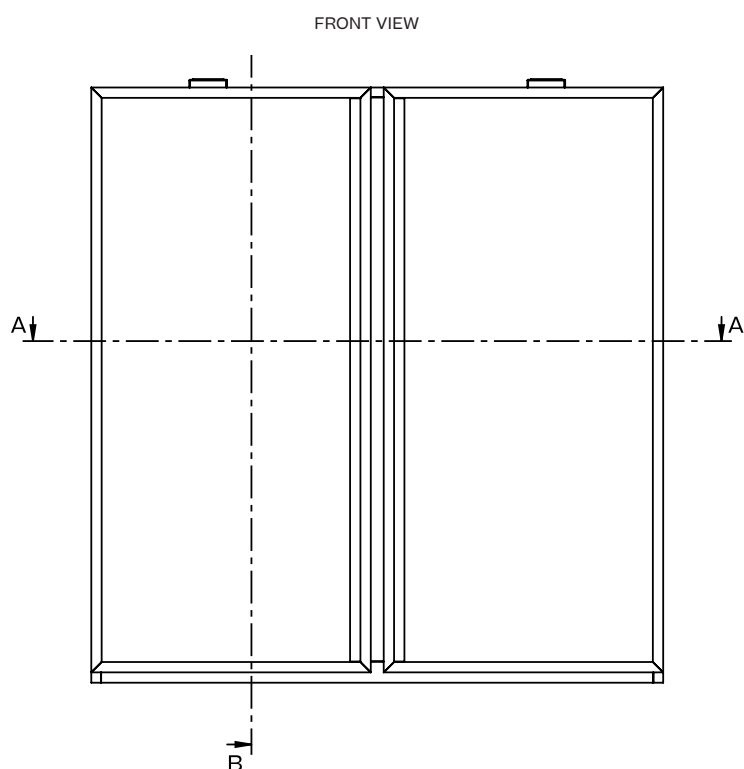
Exterior - Interior

Height	2350 / 92,5 - 2170 / 85,4
Width	2210 / 87 - 2134 / 84
Depth	1080 / 92,5 - 1040 / 40,9
Tabletop regulable (h x w x d)	700-1200 x 925 x 700 / 27,5-47,2 x 36,4 x 12,2

Kall L Dimensions

Designer
Kettal Studio

Collection
Kall



SECTION B-B
SCALE 1:20

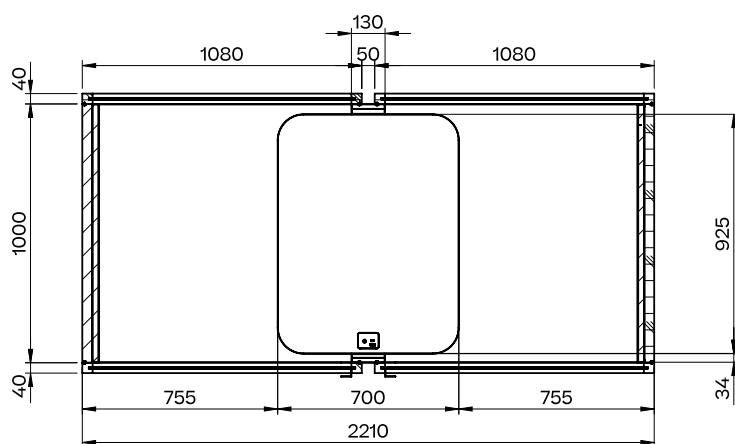


TABLE SECTION

Kall L Features

Designer
Kettal Studio

Collection
Kall



* Stools are optional



LED Lighting with PIR sensor & regulable



Wheels for an easy transport



Leveling feet



Sustainably Soundproof



Adjustable desk



Integrated stool or swivel armchair (Optional)



Silent ventilation system



Plug & Play 100-240 V + USB A + USB C



More accessories: hanger



PIR sensor



Fast Assembly



Modularity



UL Components



CE Certified



Socket

Kall L

Features

Designer
Kettal Studio

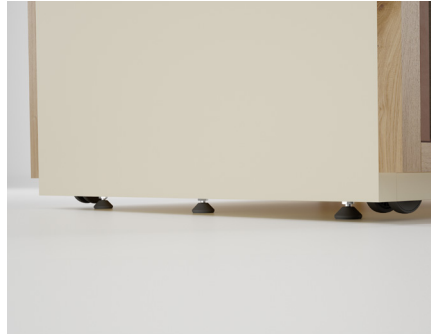
Collection
Kall

Silent Ventilation



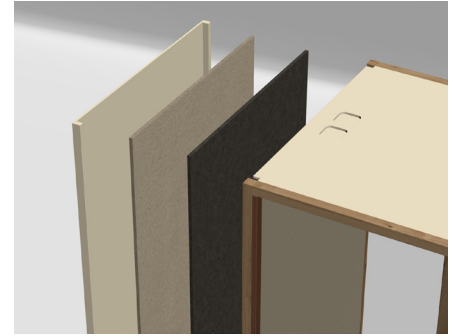
The air enters through the floor (back of the stool) and comes out through the gap of each side of the table panel (1 cm of space) that is used to raise and lower the table.
The cabin has a flow rate of 230m³/h (64 l/s) 1 air change per minute inside. The nominal flow rate of the fans is 120m³/h.

Integrated wheels and Leveling feet



To ensure the stability of the cabin, the position of the regulator feet should be adjusted to raise the wheels. This procedure can be performed using a wrench, as the regulator feet have a nut that allows for adjustment. To move the cabin, it is necessary to raise the regulator feet again.

Sustainably Soundproof



Class B, according ISO 23351-1
Test: 28,9 dB (D_{SA})
Acoustic glass panels 3+3 with 35 dB.
Wood panel + PET + Foamed fabric.
Acoustic Absorption aw= 0,90

Test Report

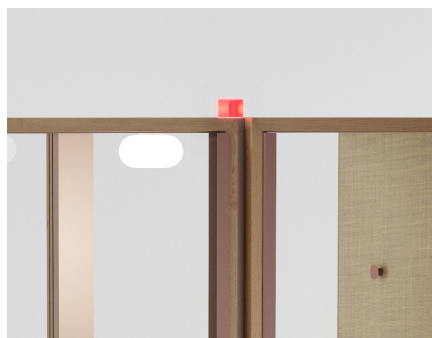


Analog Controller

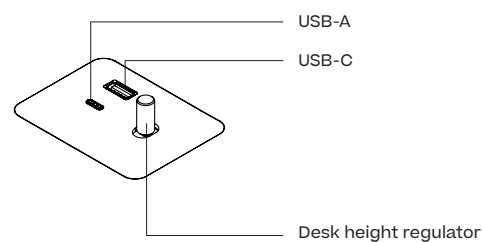
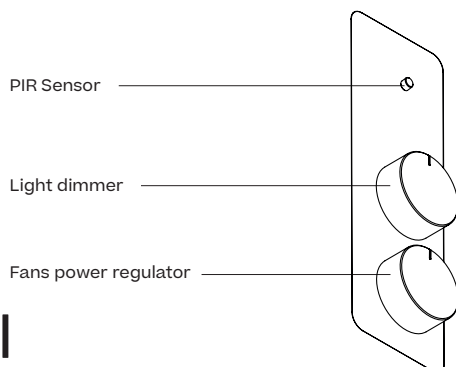


Adjustable table. Plug USB-A / USB-C / shelf light dimmer, fans power regulator and desk height regulator

Occupancy Light (Opt.)



The Busy Light indicates whether the booth is occupied or not. When occupied, it emits a red light, and when it's available, the light turns green.



Kall L Features

Designer
Kettal Studio

Collection
Kall

LED Ceiling Light



LED Ceiling Light
3000K (Dimmable)
Ambient Lighting
Diameter 200mm

Adjustable Desk



The table height is adjustable by the cylindrical switch on the controller.

It can be adjusted from 700 to 1200 mm in height. When non-adjustable height is 1100mm.

It supports a maximum weight of 100 kg.

Curtains (Opt.)



Curtains provide privacy and give a more aesthetic and personalized look to the cabin.

PIR Sensor



Located in the column.

The described system operates in three main states: in the idle state, the cabin's lights and fans are off; when occupied, the PIR sensor triggers the cabin's lights and fans, with levels set by corresponding potentiometers (ranging from 10% to 100%); when unoccupied, the lights and fans remain on, turning off after an adjustable period (3 to 60 minutes) set by an internal potentiometer on the CPU PCB, which is not user-accessible.

Swivel armchair (Opt.)



Swivel armchair for a comfortable seating while meetings.

Adjustable Stool (Opt.)



Adjustable via lever located under the seat.

Adjustable from 550 to 800 mm.
It supports a maximum weight of 200 kg.

Kall L Features

Designer
Kettal Studio

Collection
Kall

Hanger / Coat rack



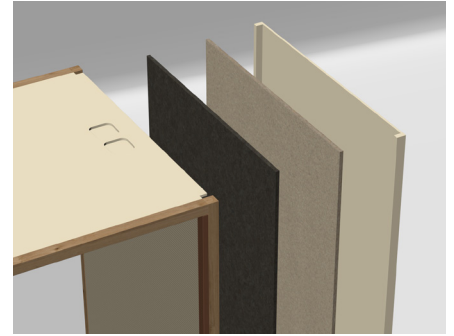
A hanger to hang your coat, purse, or other garments and keep your workspace clear.

Plug & Play



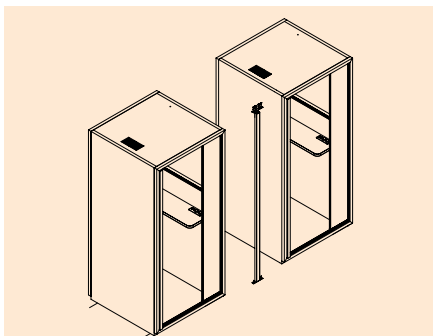
The booth can be connected either from the ceiling or the floor, according to the customer's preference. You will simply need to connect the cable to the ceiling or the floor.

Fast Assembly



This product can be assembled in 90 minutes.

Modularity



Our Kall booths can be combined in different ways to create work environments according to the needs of each user and adapt to different types of space.

To connect the booths a connecting plate is required (optional).

CE Certified & UL Recognized

This product is designed in accordance with European regulations (CE) and UL listed (USA).

Environmental Product Declaration

Scan this QR code to view the EPD report and the results of the Kall Booth family.



Kall L Finishes

Designer
Kettal Studio

Collection
Kall

Aluminium Details – Terrain Paints

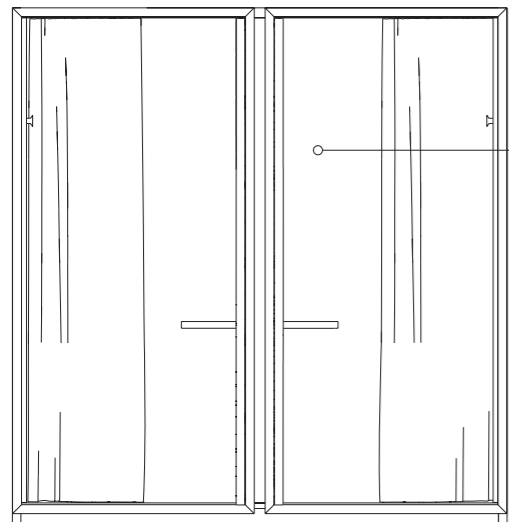


Desert Storm
11C Dry Clay
08C

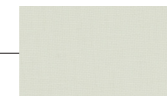
Compact Wood



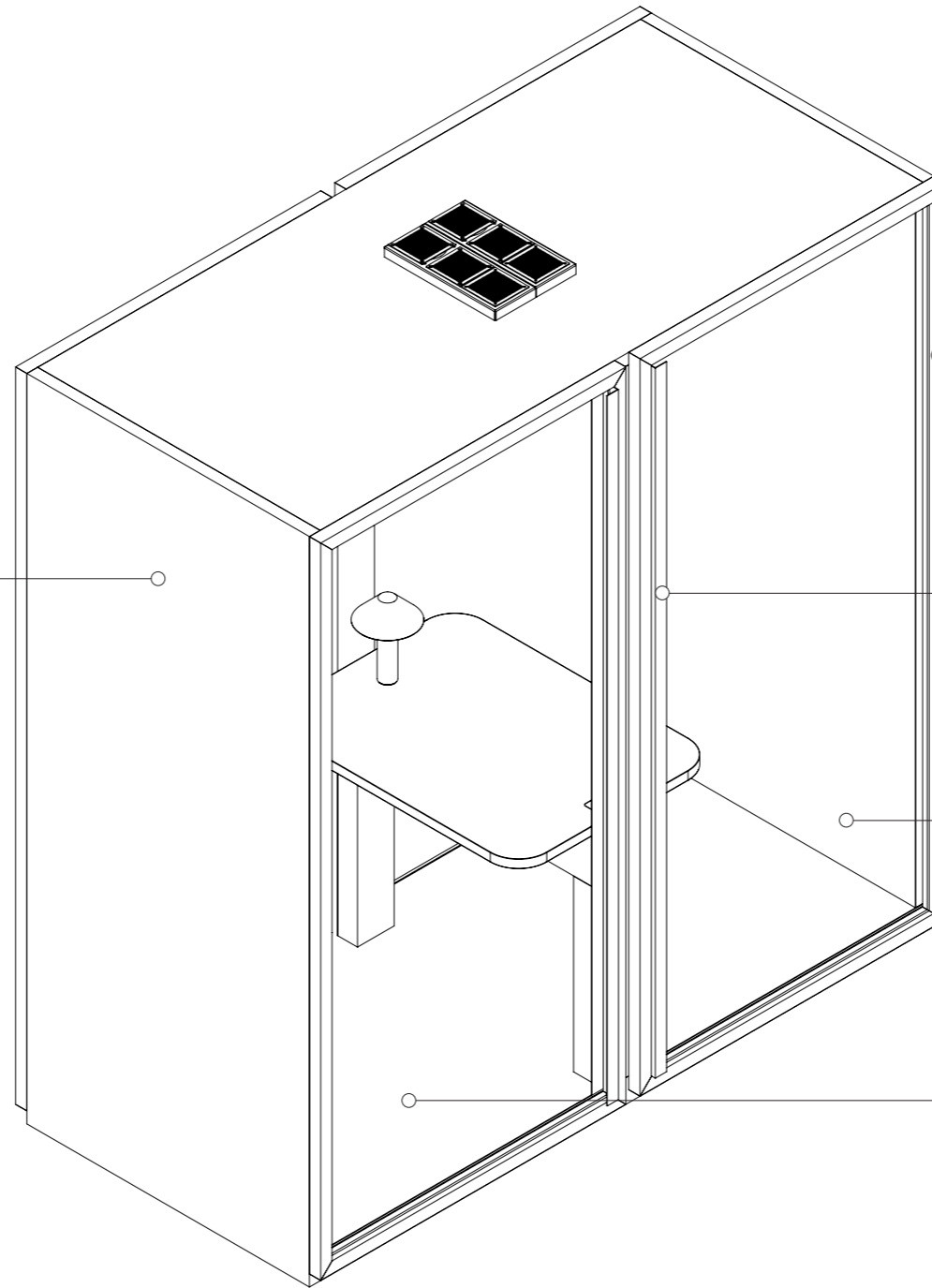
Soft Beige
LW1 Beige Almendra
LW4



Curtains*



White Smooth
000



Standard Combination Alu + Wood

Compact Wood Terrain Paints



Light Oak
CW1 Desert Storm
11C



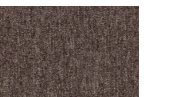
Dark Oak
CW2 Dry Clay
08C

Base (Standard)



Rice Cake
F01

Carpet



Kall Floor

Kall L Seater Finishes

Designer
Kettal Studio

Collection
Kall

Swivel armchair

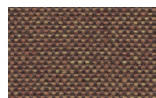
Base Fabric



Rice Cake
F01



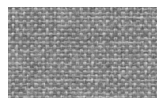
Pecan Pie
F04



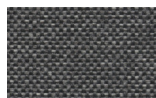
Indian Sunset
F05



Burlywood
F06

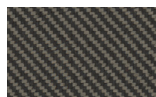


Stardew
F09



Orion Grey
F10

Relate



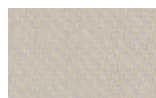
V07



V04



V02



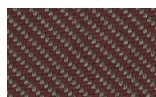
V09



V10



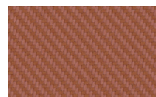
V12



V13



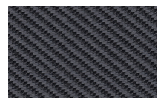
V17



V18



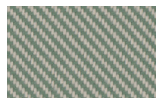
V20



V06



V25



V31



V32

Stool

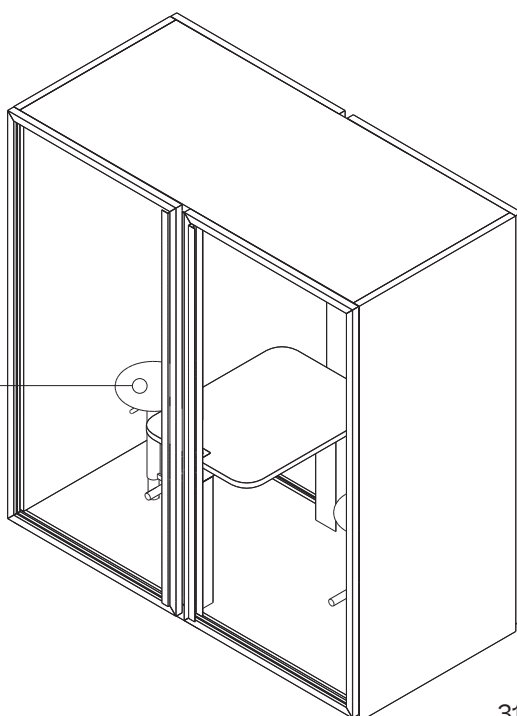
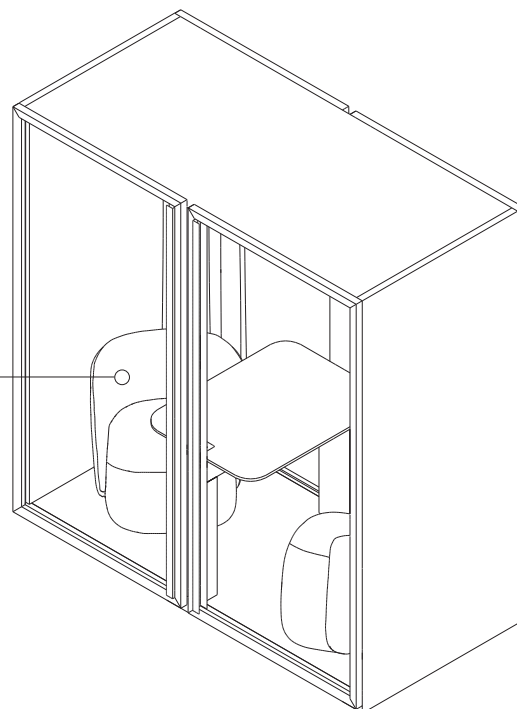
Terrain Paints / Base. Standard



Arabica
09C



Pecan Pie
F04



Kall XL,
by Kettal Studio

kettal

Kall with for four people. It is possible to add two swivel clubs or stools.
Convenient to sit down for meetings in private.
The exceptional acoustics and physical comfort allow for better communication, as well as concentration.

Specifications

- Glazed door
- Wheels
- Wooden frame
- Acoustic panels
- Absorption system
- Leveling feet
- USB A+C
- Curtains (Opt.)
- Faced external wall
- Air ventilation system
- LED lighting
- PIR sensor
- Integrated stool (Opt.)
- Adjustable height table (Opt.)




* Stools and table are optional

Kall XL

Designer
Kettal Studio

Collection
Kall



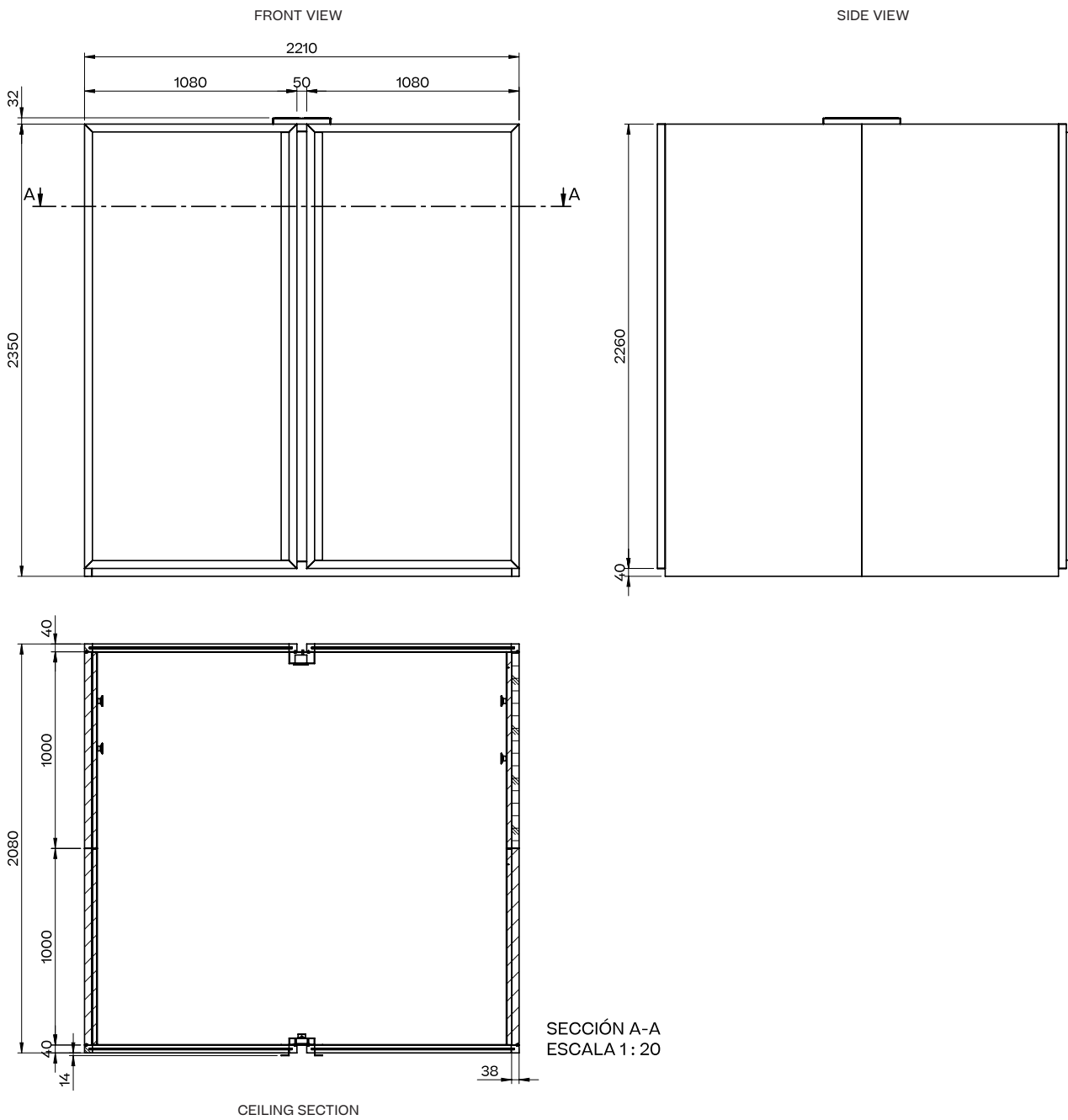
 Furniture is not included

Kall XL

Dimensions

Designer
Kettal Studio

Collection
Kall



Dimensions (mm/inch)	Exterior - Interior
Height	2350 / 92,5 - 2170 / 85,4
Width	2210 / 87 - 2134 / 84
Depth	2080 / 819 - 2000 / 78,7

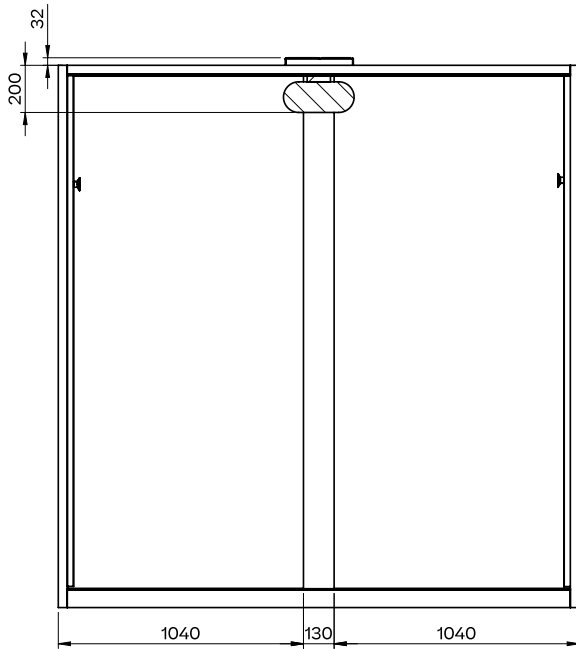
Kall XL

Dimensions

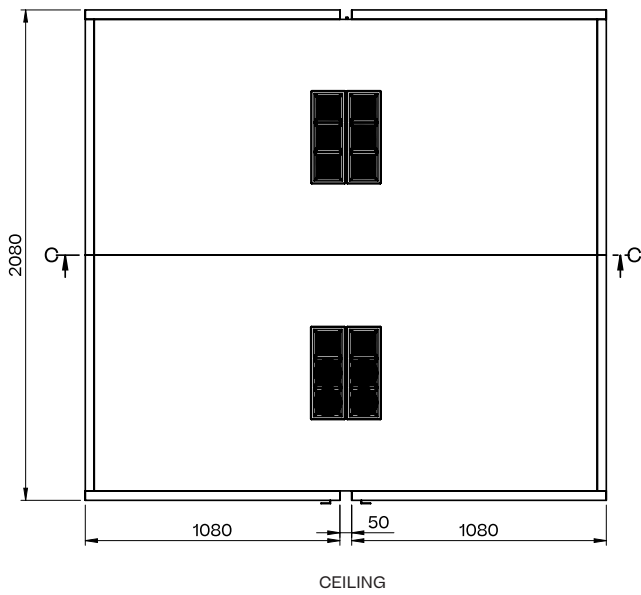
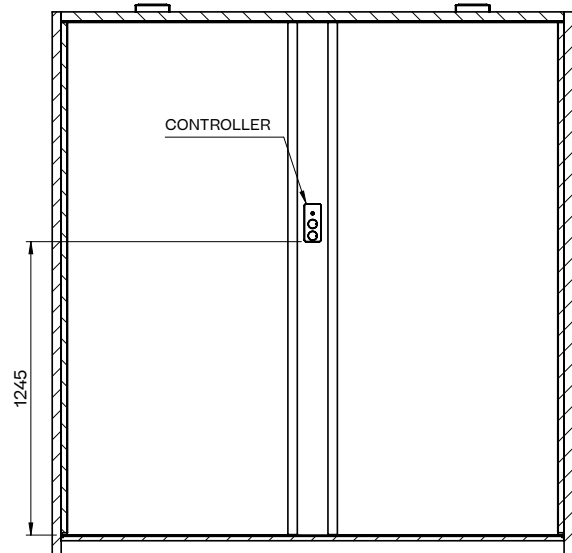
Designer
Kettal Studio

Collection
Kall

BACK COLUMN
(INSIDE THE BOOTH)



FRONT COLUMN
(INSIDE THE BOOTH)



Dimensions (mm/inch)

Exterior - Interior

Height	2350 / 92,5 - 2170 / 85,4
Width	2210 / 87 - 2134 / 84
Depth	2080 / 819 - 2000 / 78,7

Kall XL Features

Designer
Kettal Studio

Collection
Kall



* Swivel armchairs and table are optional



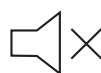
LED Lighting with PIR sensor & regulable



Wheels for an easy transport



Leveling feet



Sustainably Soundproof



Adjustable desk



Integrated swivel armchair (Optional)



Silent ventilation system



Plug & Play 100-240 V + USB A + USB C



More accessories: hanger



PIR sensor



Fast Assembly



Modularity



UL Components



CE Certified



Socket

Kall XL Features

Designer
Kettal Studio

Collection
Kall

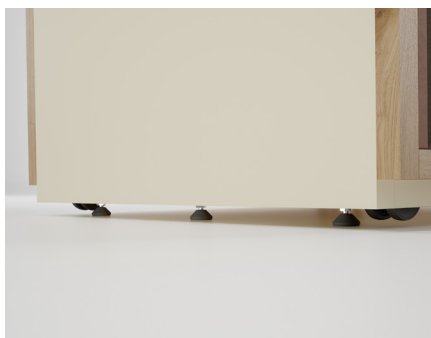
Silent Ventilation



The air enters through the floor (back of the stool) and comes out through the gap of each side of the table panel (1 cm of space) that is used to raise and lower the table.

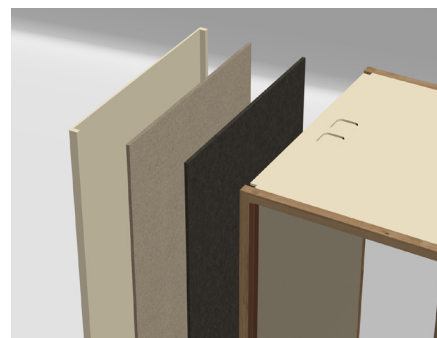
The cabin has a flow rate of 460m³/h (128 l/s) 1 air change per minute inside. The nominal flow rate of the fans is 120m³/h.

Integrated wheels and Leveling feet



To ensure the stability of the cabin, the position of the regulator feet should be adjusted to raise the wheels. This procedure can be performed using a wrench, as the regulator feet have a nut that allows for adjustment. To move the cabin, it is necessary to raise the regulator feet again.

Sustainably Soundproof

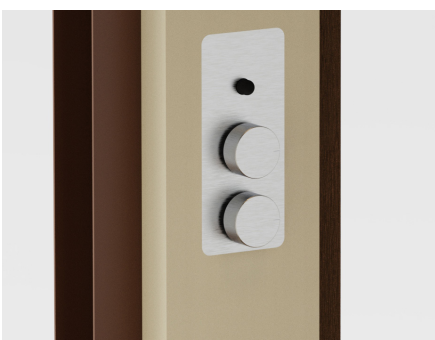


Class B, according ISO 23351-1
Test: 28,9 dB (D_{SA})
Acoustic glass panels 3+3 with 35 dB.
Wood panel + PET + Foamed fabric.
PET Absorption = 0,90

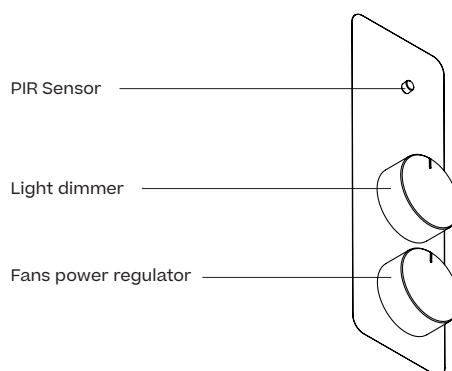
Test Report



Analog Controller



Light dimmer, fans power regulator and PIR Sensor. Located in the frontal column (inside the booth).



Kall XL Features

Designer
Kettal Studio

Collection
Kall

LED Ceiling Light



LED Ceiling Light
3000K (Dimmable)
Ambient Lighting
Diameter 350mm

Hanger / Coat rack



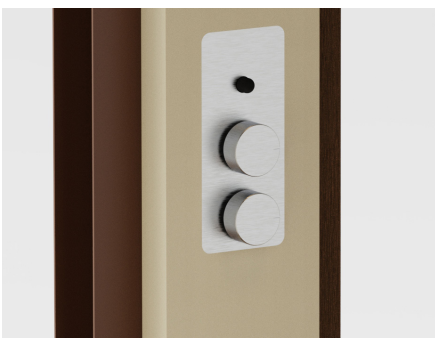
A hanger to hang your coat, purse, or other garments and keep your workspace clear.

Curtains



Curtains provide privacy and give a more aesthetic and personalized look to the cabin.

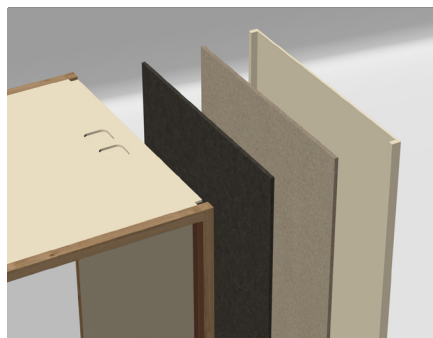
PIR Sensor



Located on the Analog Controller (column).

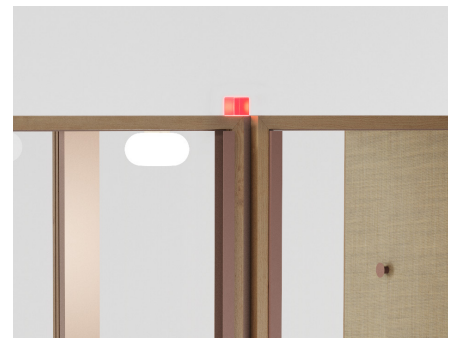
The described system operates in three main states: in the idle state, the cabin's lights and fans are off; when occupied, the PIR sensor triggers the cabin's lights and fans, with levels set by corresponding potentiometers (ranging from 10% to 100%); when unoccupied, the lights and fans remain on, turning off after an adjustable period (3 to 60 minutes) set by an internal potentiometer on the CPU PCB, which is not user-accessible.

Fast Assembly



This product can be assembled in 90 minutes.

Occupancy Light (Opt.)



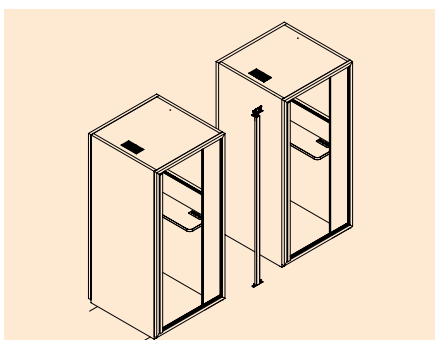
The Busy Light indicates whether the booth is occupied or not. When occupied, it emits a red light, and when it's available, the light turns green.

Kall XL Features

Designer
Kettal Studio

Collection
Kall

Modularity



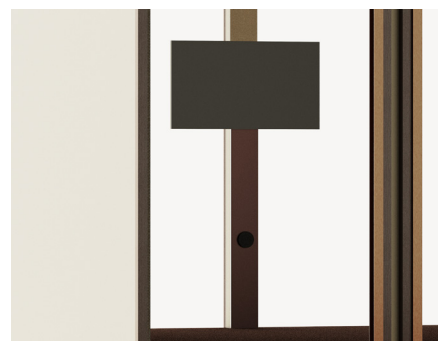
Our Kall booths can be combined in different ways to create work environments according to the needs of each user and adapt to different types of space.

Plug & Play



The booth can be connected either from the ceiling or the floor, according to the customer's preference. You will simply need to connect the cable to the ceiling or the floor.

TV Kit (Optional)



Kettal recommends a VESA 100x100 support, and TV monitors up to 32". It must be installed in the column above the socket location. All the wiring is inside the column.



More information about
TV Kit's installation

CE Certified & UL Recognized

This product is designed in accordance with European regulations (CE) and UL listed (USA).

Environmental Product Declaration

Scan this QR code to view the EPD report and the results of the Kall Booth family.



Kall XL Finishes

Designer
Kettal Studio

Collection
Kall

Aluminium Details – Terrain Paints



Desert Storm
11C

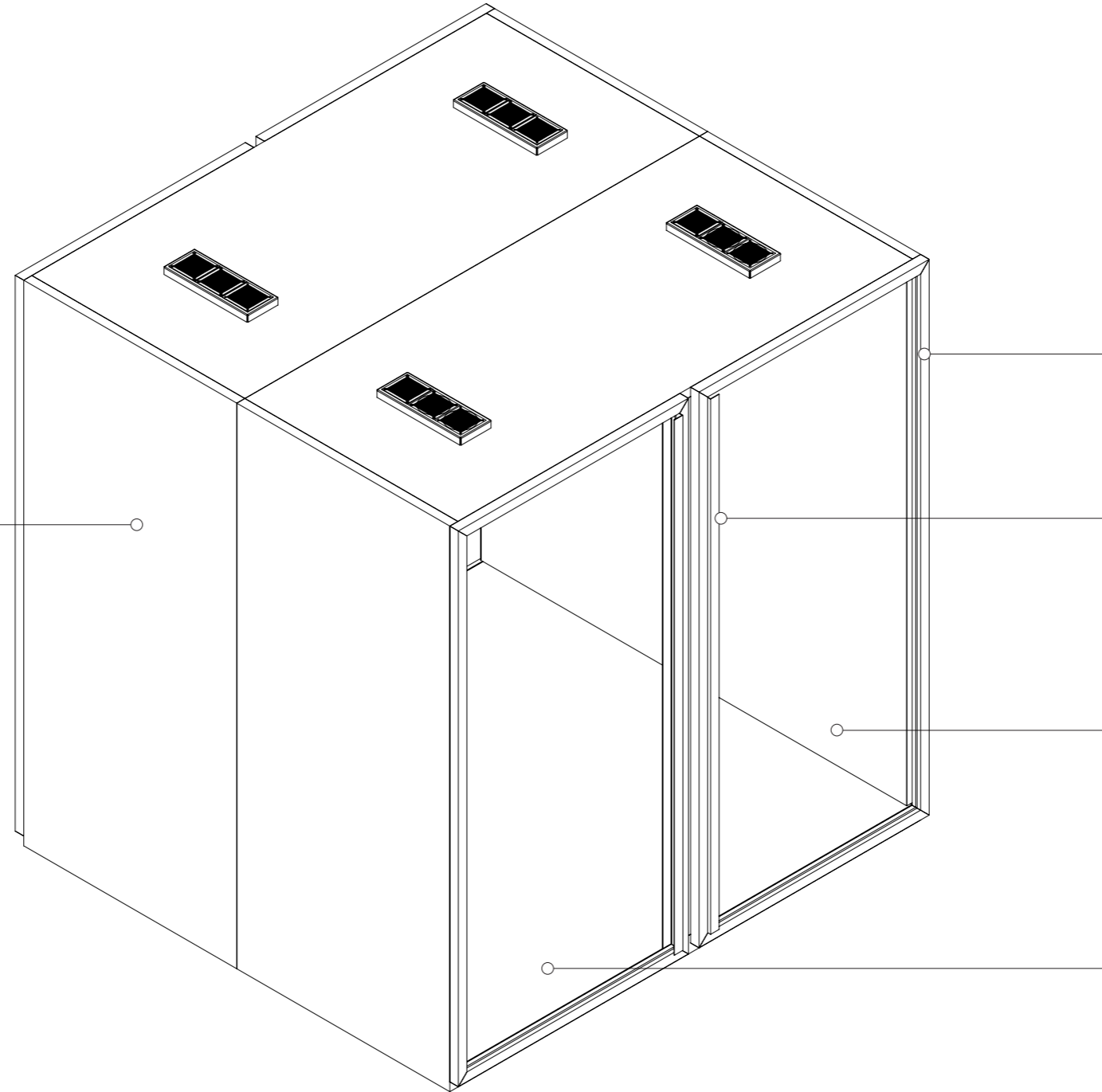
Dry Clay
08C

Compact Wood



Soft Beige
LW1

Beige Almendra
LW4



Standard Combination Alu + Wood

Compact Wood Terrain Paints



Light Oak
CW1

Desert Storm
11C



Dark Oak
CW2

Dry Clay
08C

Base (Standard)



Rice Cake
F01

Carpet



Kall Floor

Kall,
Aesthetics & Materiality

kettal

Base Fabric

Designer
Kettal Studio

Collection
Kall

Description

Base fabric is specially crafted for indoor furniture upholstery and cushions. The material features a sophisticated palette, ranging from warm browns to cool greys, providing a stylish and versatile option for enhancing your indoor spaces.

Care instructions



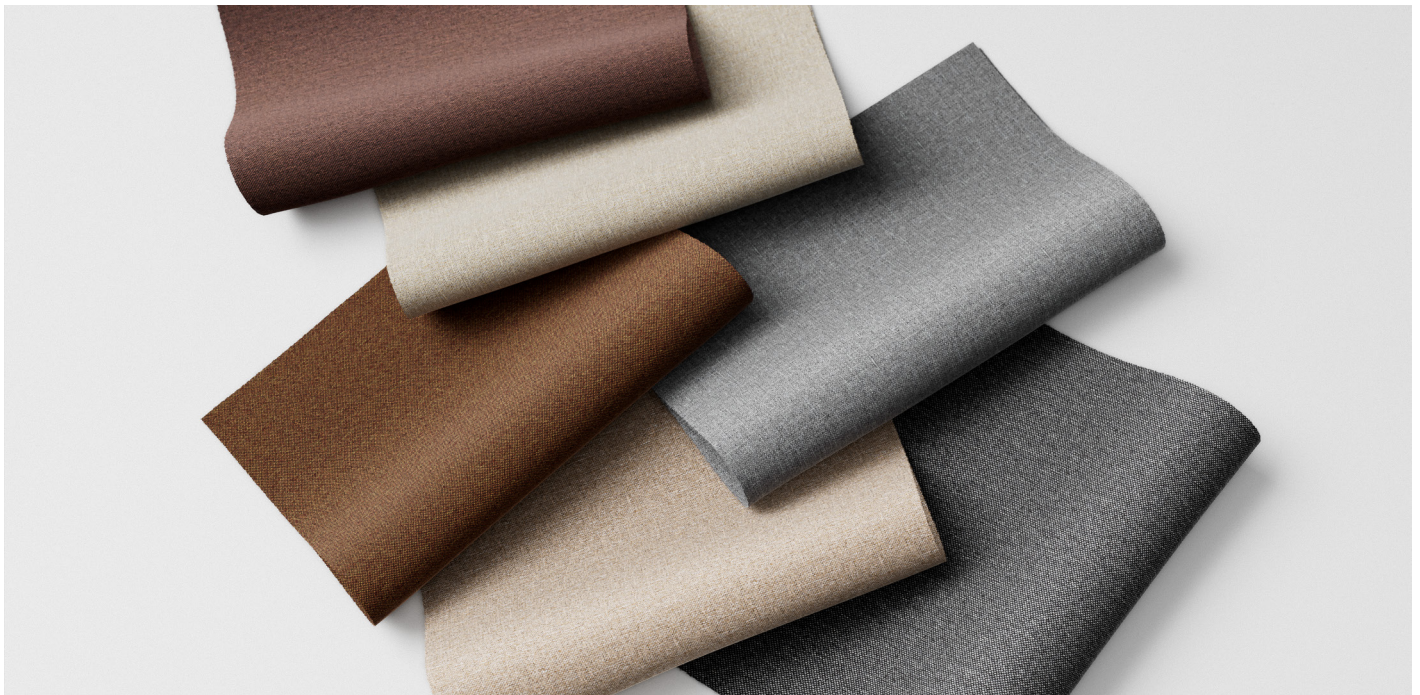
Certificates



Suitable for
indoor use only



100% Recyclable
(Trevira CS)



Technical specifications

Composition	100% Polyester Trade Mark Trevira CS
Weight (g/m ²)	250
Abrasion resistance (Martindale) 7	0.000 rubs ISO 12947-2
Lightfastness	6 (blue scale) UNI EN ISO 105-B02
Fastness to rubbing	4/5 UNI EN ISO 105-X12
Pilling	5 UNI EN ISO 12945-2
Acoustic performances	0,6 ISO 354
Fire tests	UNI 9174 - 8456 Class C1 · UNI 9175 Class 1 IM · DIN 4102 Class B1 · NF 92501-7 Class M1 · NF D 60013 · Class AM18 · EN 1021-1 & 2 · BS Crib 5 · BS 7176 · Class Medium Hazard EN 13773 Class 1 OENORM · 3800-1 Class B1,Q1,TR1 · California TB117 · USA NFPA 701 · USA NFPA 260 · IMO Part 8 Upholstery

Color Shades



Rice Cake
F01

Compact Wood

Designer
Kettal Studio

Collection
Kall

Description

Compact wood imitates the appearance of natural wood but offers superior mechanical properties. This material is used for the outer panels of our Kall booths and Pavilion O panels.

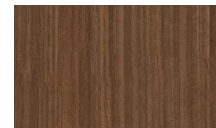
Technical specifications

Resistance to surface wear (N)	≥ 150 EN 438-2
Resistance to scratching	Smooth finishes: 2 / Texture finishes: 3
Thickness (mm)	6,5
Resistance to water vapour	4 EN 438-2
Resistance to staining	5 EN 438-2
Lightfastness (Xenon arc lamp)	4 to 5 EN 438-2
Reaction to fire	D-s2, d0 Class EN 13501-1

Colors



Light Oak
CW1



Dark Oak
CW2



Soft Beige
LW1



Almond Beige
LW4



Suitable for
indoor use only

Terrain Paints

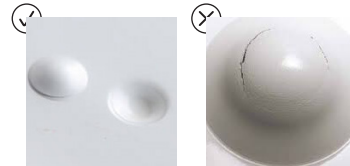
Designer
Kettal Studio

Collection
Kall

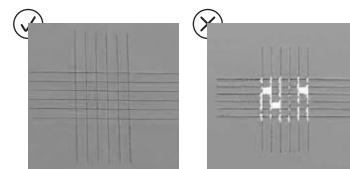
Description

Electrostatic powder coating process applied. This paint mixes a specific resin that offers greater hardness compared to the paints used in architecture. Terrain Paints are designed to coat aluminium profiles used in architecture and for other substrates where the maximum resistance to the outdoors is needed. This is a powder coating formulated with polyester resins and free of TGIC, pigments, and additives. These provide excellent exterior durability with very good gloss retention and colour stability.

Impact test



Scratch test



1x1 mm



Local supplier



Class A2

Polymerization
at 160 °C



Terrain Paints

Designer
Kettal Studio

Collection
Kall

Characteristics	Min.	Max.	Method
Baking time / temperature	24 to 150 °C / 75,2 to 302 °F	26 to 150 °C / 78,8 to 302 °F	Total time
Gloss at 60° angle	6	9	ISO 2813
Direct impact 12.5 mm	30		ISO 2813
Indirect impact 12.5 mm	30		ISO 2813
Cross-cut adhesion	0	0	ISO 2813
Erichsen Cupping test	5	11	ISO 2813
Bend test (Cylindrical Mandrel)		6	ISO 2813
Avg. Particle size	50	55	MALVERN
Particle size % < 100 MICRONS	80	95	MALVERN
Particle size % < 50 MICRONS	50	65	MALVERN
Particle size % < 10 MICRONS	4	8	MALVERN
Delta E colour		VISUAL	CIELAB
General appearance	Textured		NIZI-001

Door Frame Color



Desert Storm
11C



Dry Clay
08C

Certificates



Note

We recommend following the advice given by the standards AAMA 609 and 610-02 or in the guidelines from Qualicoat.

Description

PET is a panel specially developed as an acoustic element and a versatile material for a wide range of industrial applications. This material is derived from post-consumer recycled plastic bottles, the properties of this non-woven fabric give it a non-directional texture with a uniform color throughout the panel. Its well-defined edges add rigidity while also making it easy to cut into any shape.

The combination of form and function in PET not only provides the panel with an excellent appearance but also enables it to absorb, reflect sound, and serve as a decorative element. It can absorb indoor noise and effectively control sound transmission in medium and high frequencies. This makes it suitable for applications requiring noise absorption, volume reduction, and echo suppression.

Technical specifications

Composition	100% Polyester made from recycled water/soda bottles without use of adhesives or other bonding agents
Fire resistance	B-s2 d0, according EN 13501
Acoustic absorption	$\alpha_w = 0,90$ a 1000 Hz
Light resistance	>7 (ISO 105-B02)



Suitable for
indoor use only



100% Recyclable



Formaldehyde
free



Acoustic Wood (Chipboard)

Designer
Kettal Studio

Collection
Kall

Description

The Acoustic Wood is one of the main components to create the acoustic lateral panel and ceiling. 10mm fire-fighter. Complies with E1 regulation

The environmental product declaration is in accordance with ISO 14025 and EN 15804.

Comply with standards EN 622- 1, EN 622-5 and EN 14322. They are considered reliable products used as raw material for the construction and furniture industry.

Properties

Board thickness (mm)	38
Density (kg/m ³)	330
Internal bond EN 319 (N/cm ²)	≥ 10 ≥ 80 ≥ 30
Screw extraction resistance EN 320 (N)	> 570
Deflection DIN 68874-1 after 28 days (mm)	≤ 4
Soundproofing coefficient R'w (dB)	28
Compression strength (kg/cm ²)	≥ 1.5
Fire behavior category EN 13501-1	D-s1, d0



Type 2
From cradle to
gate with options



Local supplier



Formaldehyde
free



Soundproof Safety Glass

Designer
Kettal Studio

Collection
Kall

Description

Soundproof safety glass, consists of two or more glass sheets joined by one or more Polyvinyl Butiral (PVB) films,

If a laminated glass is broken, the PVB film retains a large part of the glass fragments, that is, the residual strength and the maintenance of the glazing are kept in the same place until they are replaced.

These glasses filter 99% of the UV rays and contribute to extend the life of curtains, rugs, fabrics, objects, etc., which are exposed daily to natural light.

It offers protection against a need for security and complies with the requirements of current norms and regulations, both for homes, shops or offices.

In case of breakage, the fragments remain attached to the sheet.

Complies with EN 14449:2005 + AC:2005 regulation.

Chemical composition

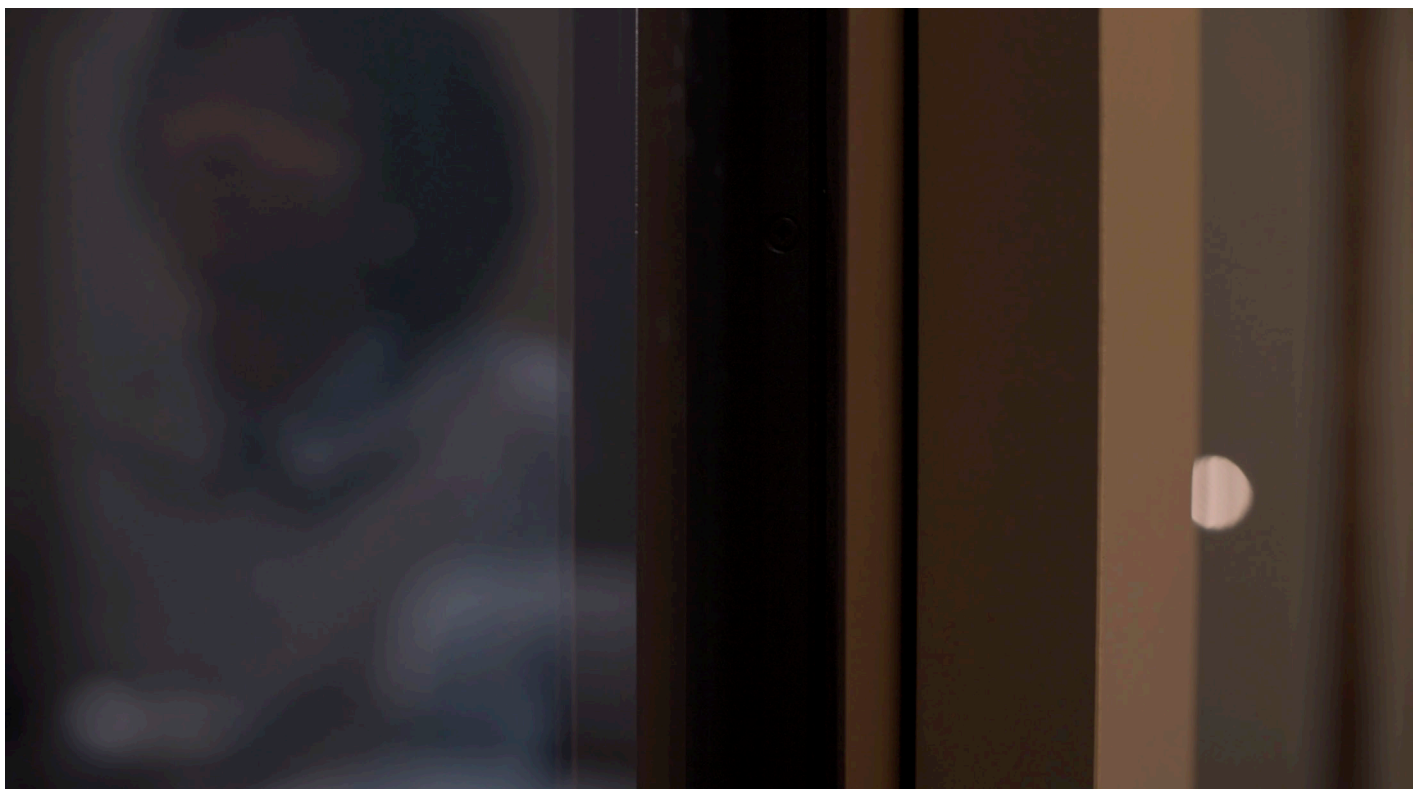
SiO_2	69 - 74 %
Na_2O	10 - 16 %
CaO	5 - 14 %
MgO	0 - 6 %
Al_2O_3	0 - 3 %
Others	0 - 5 %



Belgian
supplier



Soundproof
safety glass



Kall,
Electrical datasheet and
Maintenance

kettal

Input (As a whole)

Nominal Input Voltage	90 - 305 VAC
Maximum Input Power	150W
Inter-element Power Supply	24VDC

USB A Connector 5VDC @ 2A @ 10W

USB C Connector 5VDC, 9VDC, 15VDC, 20VDC @ 3A @ 60W USB Type C 2.0 & USB PD 3.0

PIR Operation

- In the idle state, the cabin's lights and fans are off.
- When occupied, the PIR sensor activates the cabin's lights and fans, whose levels are set by the corresponding potentiometers (both ranging from 10% to 100%).
- When unoccupied, the lights and fans remain on, turning off after an adjustable period (3 to 60 minutes) set by an internal potentiometer on the CPU PCB, not user-accessible.

Preventative maintenance

Preventative maintenance: protect the surfaces with physical barriers such as film, paper, or varnishes before placing or moving the product.

Immediate cleaning: in the event of accidental contamination or splashes of alkali or strong acids, clean the affected area immediately with plenty of clean water, especially cut-outs or holes and cavities.

Aluminum Coated Structure

For coating surfaces, we recommend following the advice in the AAMA 609 and 610-02 Guidelines or the instructions from Qualicoat, which basically consist of the following:

- Clean the surface periodically with warm water and soap or detergent with a neutral pH.
- Use a non-abrasive sponge or cloth.
- Rinse the surface with plenty of water immediately after cleaning.
- Cleaning should be done in the shade while avoiding extreme cold and heat.
- To clean grease, oils, cutting oils, adhesives, etc., we recommend using isopropyl alcohol with turpentine, applied using a soft, non-abrasive cloth.

We recommend first doing a test cleaning in an area that is not visible in order to verify that the use of unknown mixtures does not affect the surface.

Glazed Panels

Clean the glass with a specific indoor glass cleaning nonabrasive product or mix equal parts white vinegar and water in a bucket (you can also make it in a spray bottle). Optional: add a few drops of dish soap to help cut through grease and grime. Use a dry soft microfiber cloth to remove dust or dirt from the surfaces.

Dip a clean microfiber cloth into the cleaning solution and wipe the entire window surface with the damp cloth, moving in an S pattern from left to right. Wipe clean with a microfiber cloth.

Fabric Panels

The fabric can be Vacuumed, at half power where appropriate.

Wipe upholstery fabrics made from polyurethane with a dry or moist cloth. May also be vacuum cleaned with a soft brush.

For stain removal, first softly scrape off any liquids or hardened residues with a spoon or a scoop before you proceed. Any loose particles must be vacuum cleaned before further cleaning. Liquids must be soaked up with an absorbent napkin or cloth. Remove non-greasy stains by carefully dabbing with a lintfree cloth or sponge wrung out in warm water. Edge marks can be avoided by dabbing gently in circular motions towards the centre of the stain with a clean lint-free cloth. Remove greasy stains by using appropriate detergents or solvents. In all cases, we recommend to test stain-removal agents on an inconspicuous area first, to see if there is any effect on the cover.

Make sure to dry the fabric fully before use. It may also be necessary to use a hairdryer to avoid leaving edge marks.

These tips are purely recommendations and cannot guarantee complete stain removal. In all cases, we recommend contacting a professional dry cleaning.

Compact Wood panels

Wipe wood panel with a barely damp microfiber cloth to remove dust and grime. (Use a cotton cloth to avoid damaging the wood). Quickly wipe it dry with another microfiber cloth.

Don't let water sit on wood since it can warp the surface.

Swivel glass door hinges

Hinges mechanism that should be checked every month and may need some minor easy mechanical adjustment from time to time.

Ceiling

To avoid dust accumulation on top of the Pavilion O&M we recommend a regular vacuum cleaning of the ceiling exterior surface, and particularly the area where the electric box is located.